

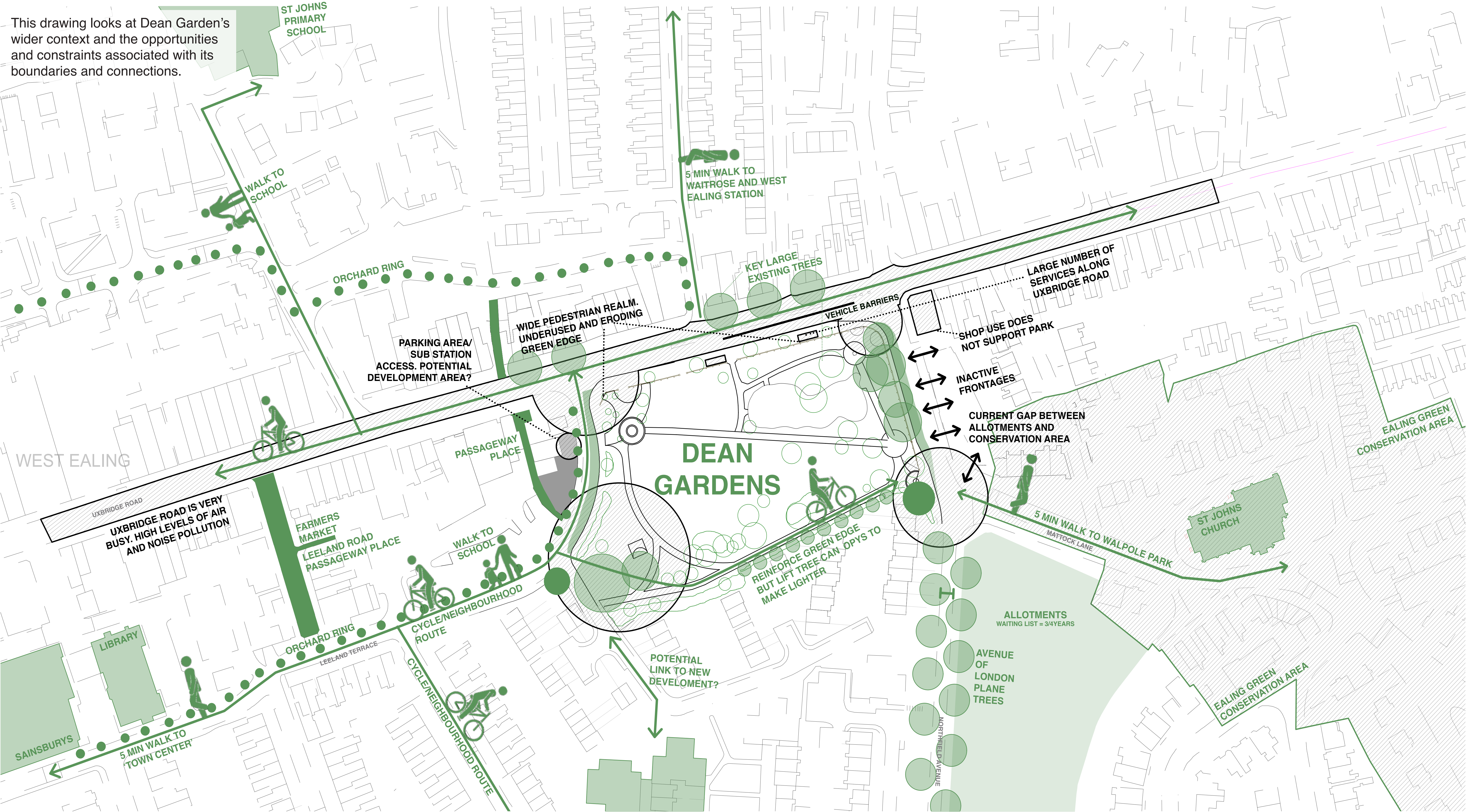
HELP SHAPE THE FUTURE OF DEAN GARDENS

INTRODUCTION

Dean Gardens in West Ealing is changing. As part of the West Ealing Liveable Neighbourhoods project, **Ealing Council** and **TfL** are undertaking ambitious improvements to the park, encouraging active travel and making the park a safer, greener, and more enjoyable space. **Kinnear Landscape Architects** and **New Practice** have been commissioned by Ealing Council to design and facilitate the transformation of **Dean Gardens**. The following boards present our initial findings and concept design options which we want your feedback on. We want the design of the park to be a collaboration with the people that will use it to ensure it is well loved and well used.

OPPORTUNITIES AND CONSTRAINTS - WIDER CONTEXT AND W.E.L.N.

This drawing looks at Dean Garden's wider context and the opportunities and constraints associated with its boundaries and connections.



INCREASING TREE CANOPY COVER AND PLANTING



CONTRASTING SCALE
Surrounding Large trees. Dean Gardens side needs to match this.



FOREST SCALE TREES
Proposals should add to Existing Network
Help Reduce Pollution - WELN Objective



SUSTAINABLE DRAINAGE
Making the Park's green presence felt.
Ecology of the park effects urban realm.
Reducing noise and air pollution.

IMPROVING THE LEGIBILITY OF THE PARK



VIEW FROM CONSERVATION AREA
Park's Green Presence not felt
Potential to create green envelope around old allotment



VIEW TOWARDS CONSERVATION AREA
Green Context
High Quality Materials and Detailing



NORTHFIELD AVENUE
Inactive frontages could have uses to support the park?

ADDRESSING THE BROADWAY - AN IMPORTANT BOUNDARY



EROSION OF GREEN SPACE
Can this be taken back into the Park?

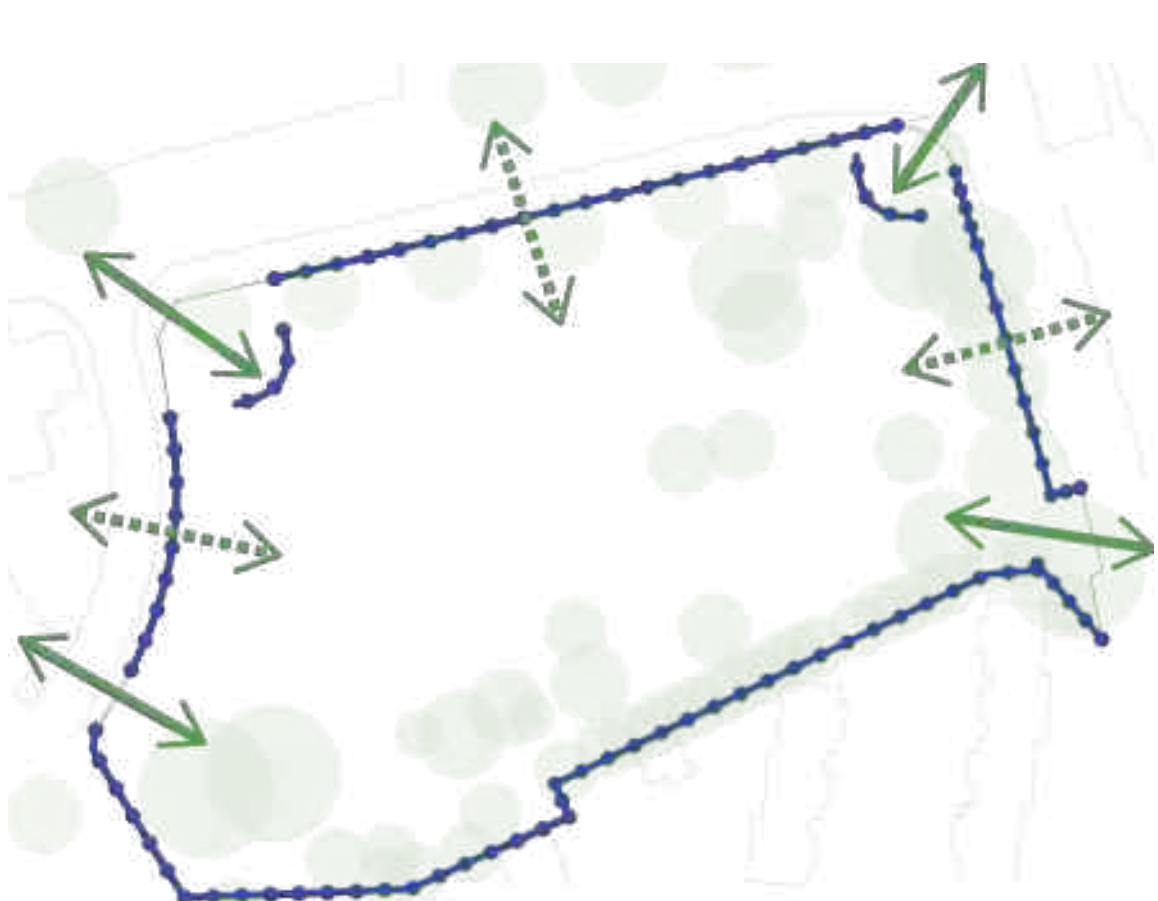


DOMINANT SERVICES
Visual and Physical Clutter

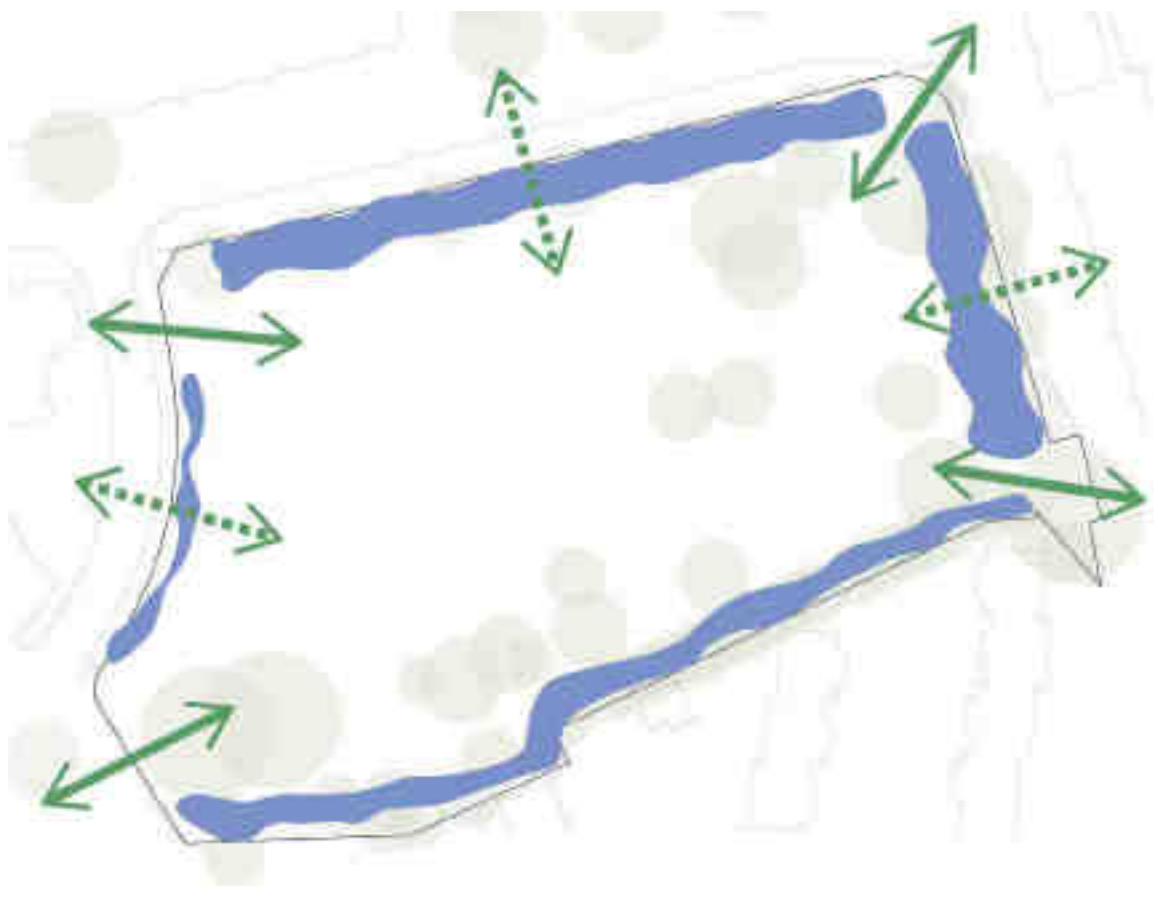


UNDER USED EDGE
Important consideration
Permeability Vs Buffer?

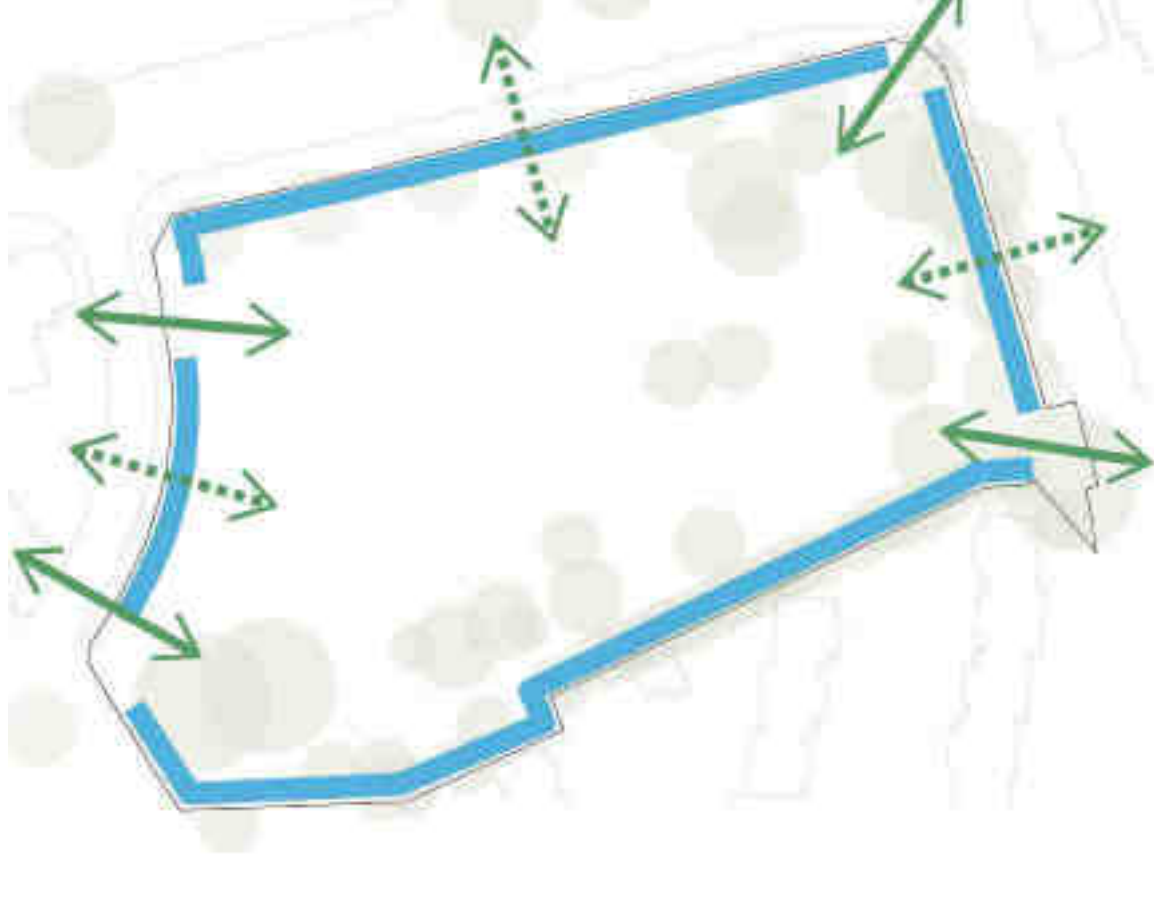
IMPROVING THE PARKS BOUNDARIES



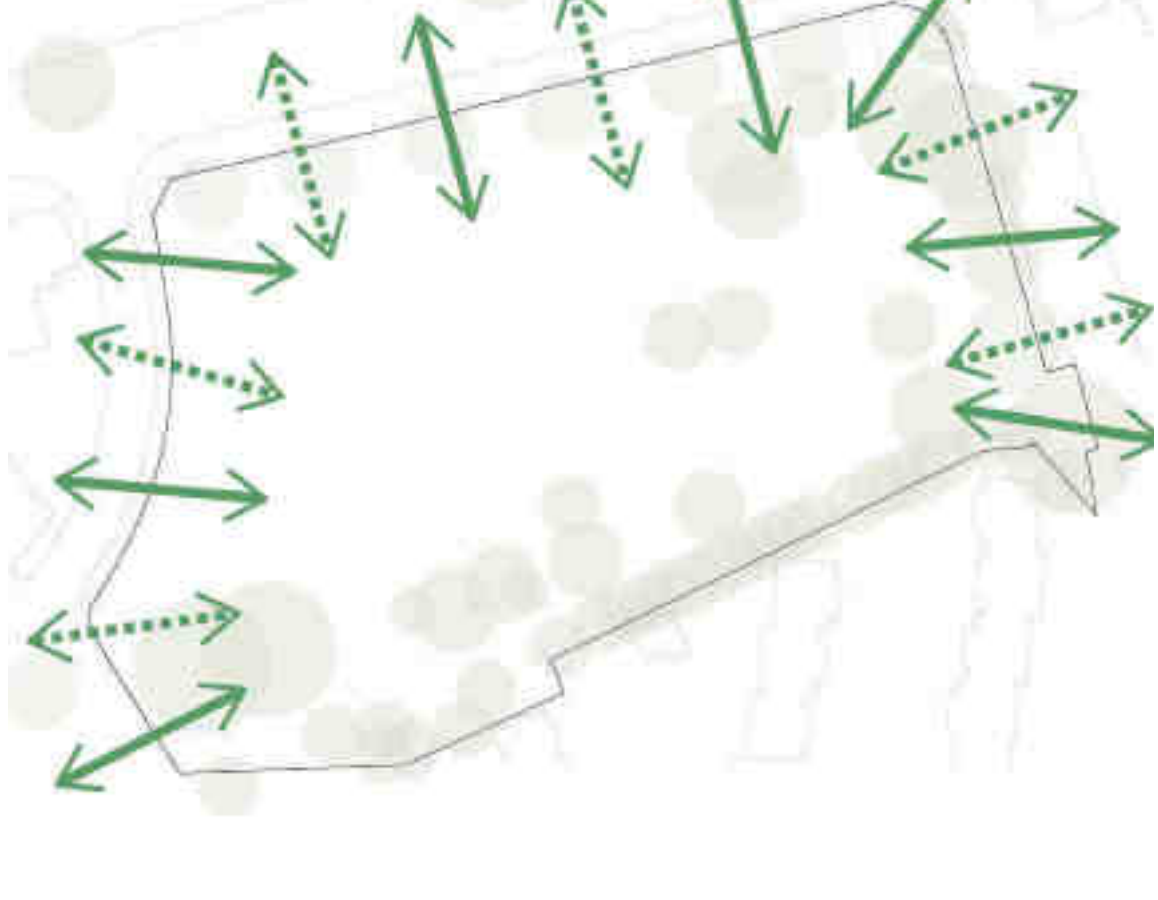
OPTION 1
Retaining existing fencing. As it currently is or introduce a new low fencing. This boundary is currently not a good buffer to noise and air pollution. Moderate physical permeability.



OPTION 2
Remove fencing and create new boundary using attractive low planting. Create barrier to movement and pollution but allow visual permeability. Benefit to Ecology and nature.



OPTION 3
Remove fencing and create new boundary using low seating wall. Create barrier to movement but allow visual permeability. No reduction in air and noise pollution. Edge can be activated.

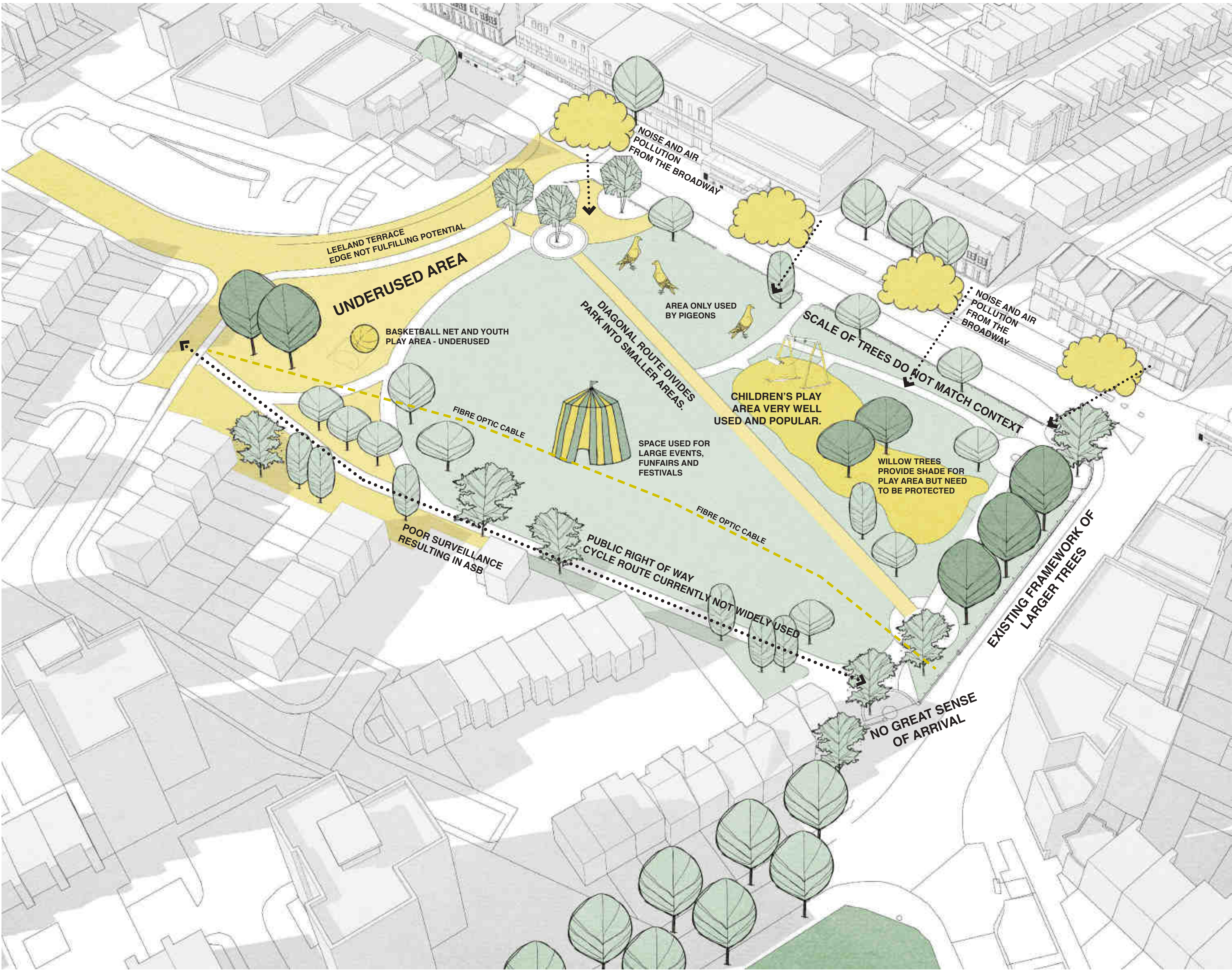


OPTION 4
Remove fencing have park boundary completely open. Full physical and visual permeability. No reduction in air and noise pollution. Park feels part of Uxbridge Road.



HELP SHAPE THE FUTURE OF DEAN GARDENS

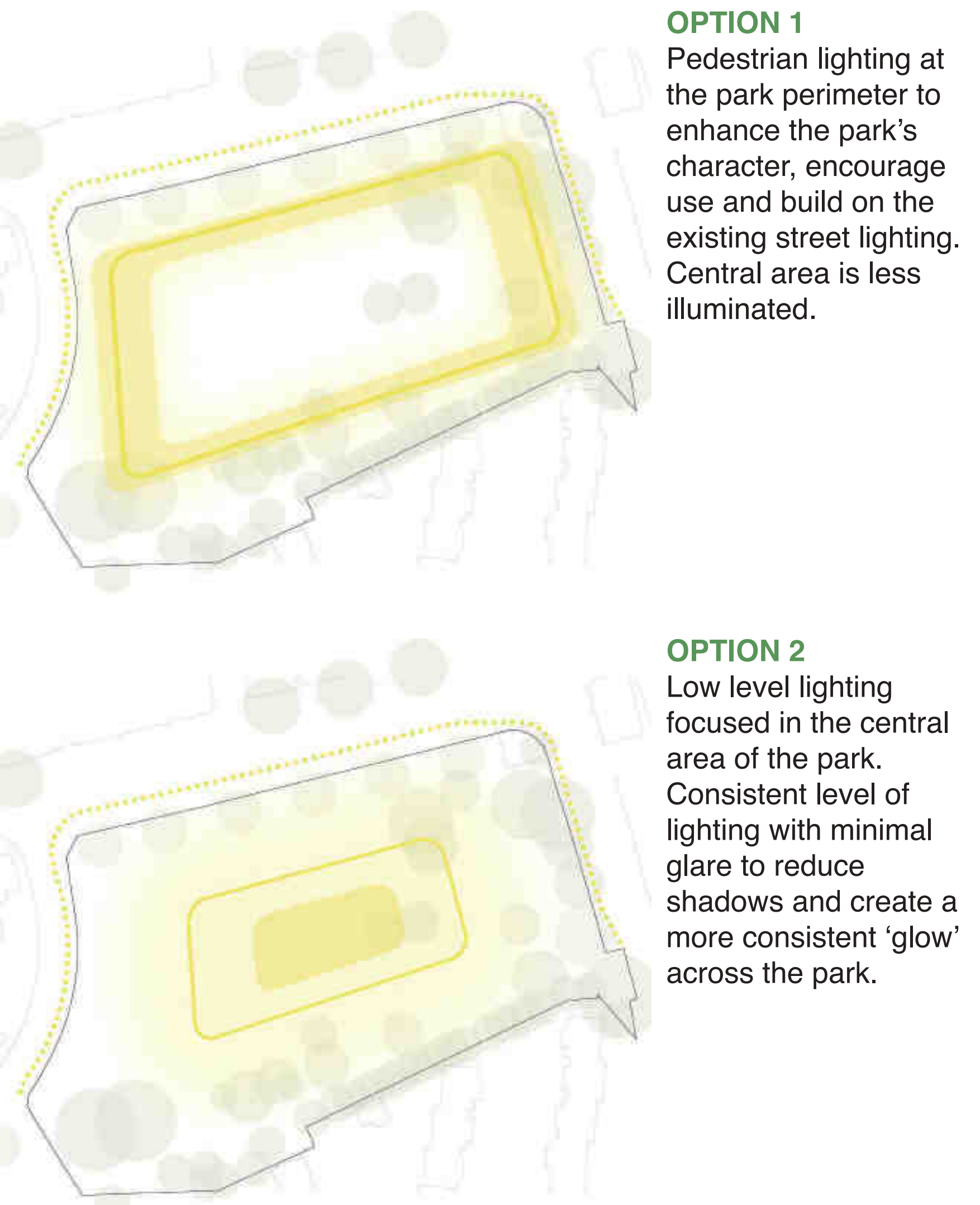
OPPORTUNITIES AND CONSTRAINTS - INSIDE THE PARK



Looking inside the park there are a number of key opportunities that we can build on to ensure Dean Gardens is successfully re-imagined, with a unique and defined character. The following board considers the opportunities to define Dean Gardens.

LIGHTING IN THE PARK

Lighting in the park will play a very important role in it's safety and how it is used in the evenings/after dark. Lighting should clarify the layout of a park by emphasizing routes, focal points, gathering places and entrances.



OPTION 1
Pedestrian lighting at the park perimeter to enhance the park's character, encourage use and build on the existing street lighting. Central area is less illuminated.

OPTION 2
Low level lighting focused in the central area of the park. Consistent level of lighting with minimal glare to reduce shadows and create a more consistent 'glow' across the park.

OPPORTUNITIES TO DEFINE DEAN GARDENS:

ACTIVATING THE PARK AND IMPROVING SECURITY



CANOPY LIFTING
Normand Park before. Dark, poor visibility.



CANOPY LIFTING
Normand Park after. Light, good visibility and retention of important trees.



COMMUNITY GROWING
Help activate Leeland Terrace. Create community cohesion



ENSURING THERE IS SUFFICIENT OPEN SPACE
For events, festivals and fairs



DEFINE ENTRANCES
Create legible and characterful thresholds. Create a sense of arrival.



LIGHTING THE PARK
Ensuring suitable lighting throughout the park to encourage a night time economy

RE-IMAGINING PLAY IN THE PARK



EXISTING PLAYGROUND
• Very popular and well used
• "Tired and in need of an update"
• Urbanises the Park
• Does not fit into natural play category
• Play equipment is prescriptive
• Not a good relationship with the Willow Trees (although shade is important)
• Fragmented, unattractive surfaces which do not contribute to play value
• Collaborative play opportunities limited
• Landform not used for play
• Fencing limits scope of play



TIMBER
Play should make use of natural elements.



LANDFORM
Play should be non-prescriptive and help define the character of the park.



CLIMBING
Play should build in opportunities to experience risk and challenge.



SENSORY
Successful play stimulates the five senses, providing access to music and sound, and different smells made by plants and leaves.



CROSS GENERATIONAL
Cross generational play avoids territorialisation of space. Play should avoid segregating children on the basis of age or ability



PLAY INTO SPORT
Encouraging a route to sport through play. Play should allow children to develop skills and coordination.

BUILD A CYCLE AND WALKING CULTURE

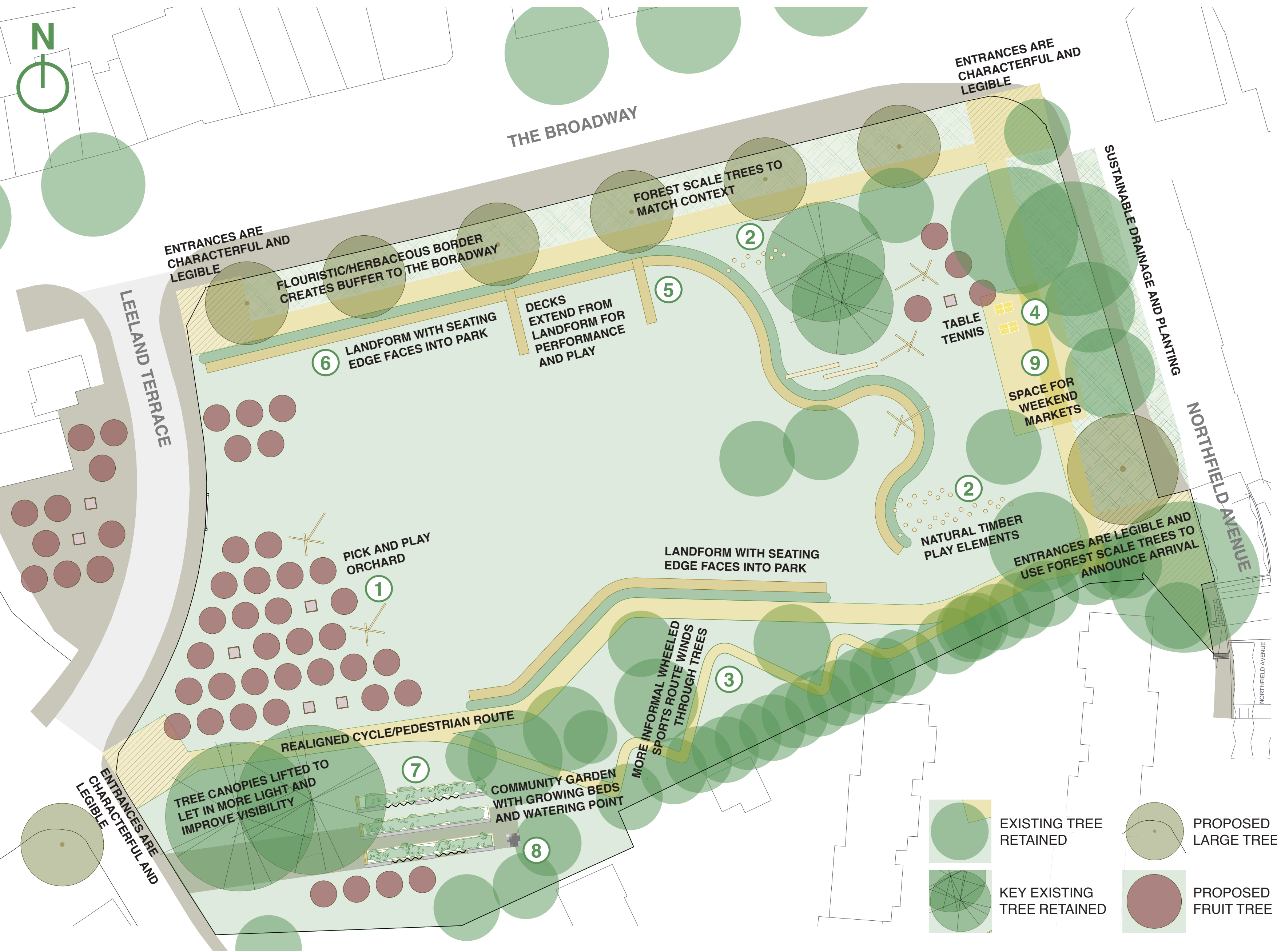
- The Mayor's Transport Strategy sets out a vision for making walking, cycling and public transport the most appealing and practical choice for 80% of journeys in London by 2040.
- This is a TFL LN Funded scheme so cycling is at the core of the project.
- A cycle route is the minimum - Can we build a cycle culture in Dean Gardens?



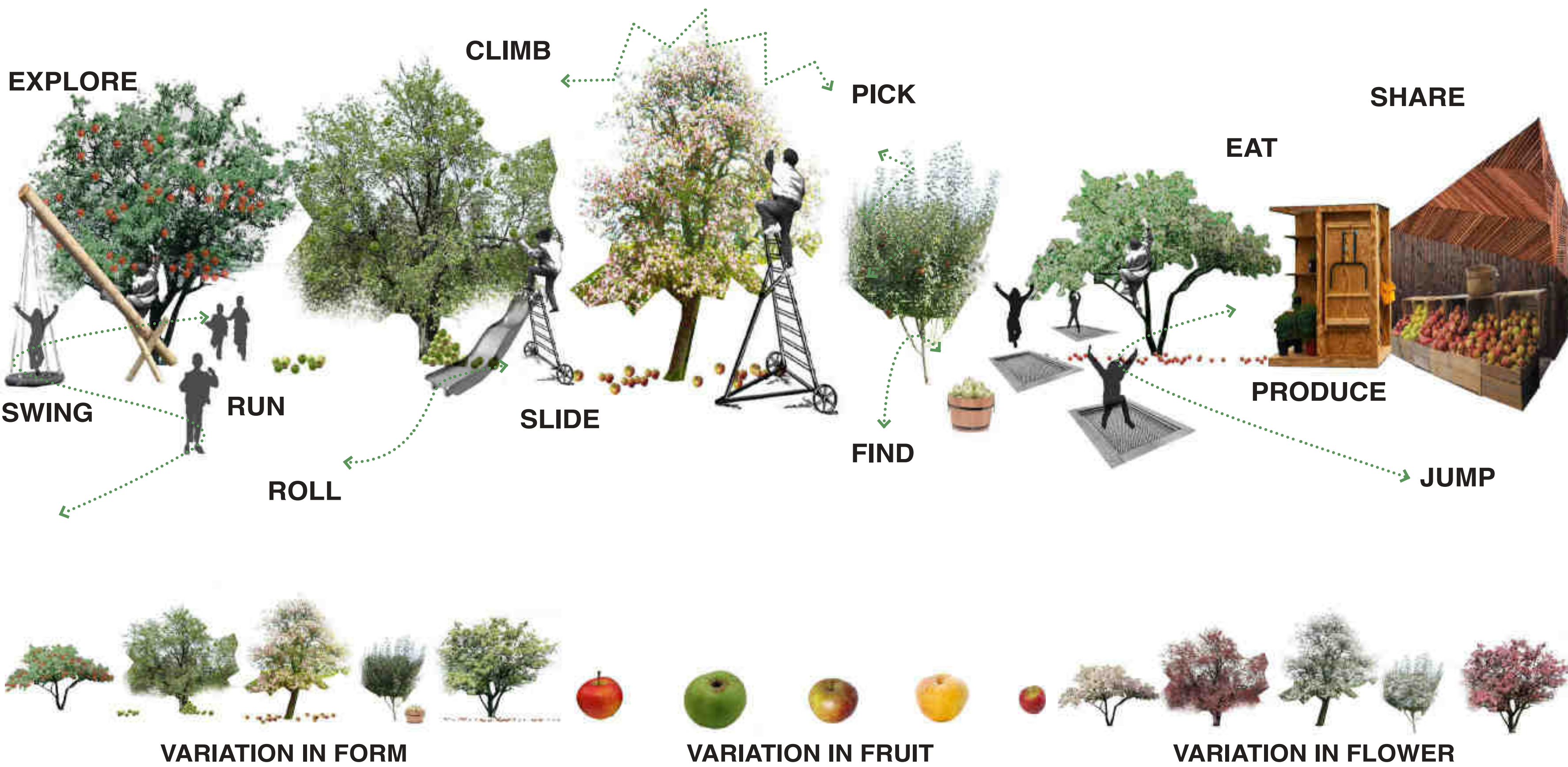
HELP SHAPE THE FUTURE OF DEAN GARDENS

3

OPTION 1 - PICK AND PLAY ORCHARD



PICK AND PLAY ORCHARD - CONCEPT IMAGE



OPTION 1 - ILLUSTRATIVE AXONOMETRIC



THIS OPTION INCLUDES THE FOLLOWING INGREDIENTS:

PLAY

- The main play element in this option is a **1 Pick and Play Orchard** which uses a variety of Apple Trees and Natural play elements to create a fantastic space for learning, exploring and playing. The grid of fruit trees extends through the park and over Leeland Terrace, expanding the park's influence into the public realm.
- 2 Natural timber play elements** are also woven through the park, varying in size and use difficulty. These timber play elements tie into the landform of the park and ensure that play is not constrained to one particular area.
- A **3 winding wheeled sports route** for a wide range of abilities is also included in this option. This will allow children, of varying age and ability, to learn how to ride their wheels and also creates a playful route to school.
- Youth play provision in Option 1 is provided through **4 table tennis tables** and **5 timber decks**. The timber decks are un-prescriptive and can be used for performances, cat walks, sitting, sunbathing and having picnics.



TABLE TENNIS PROVIDES INTERGENERATIONAL PLAY OPTIONS



APPLE TASTING IS A FUN WAY FOR CHILDREN TO LEARN ABOUT HORTICULTURE AND GROWING FOOD



A PICK AND PLAY ORCHARD



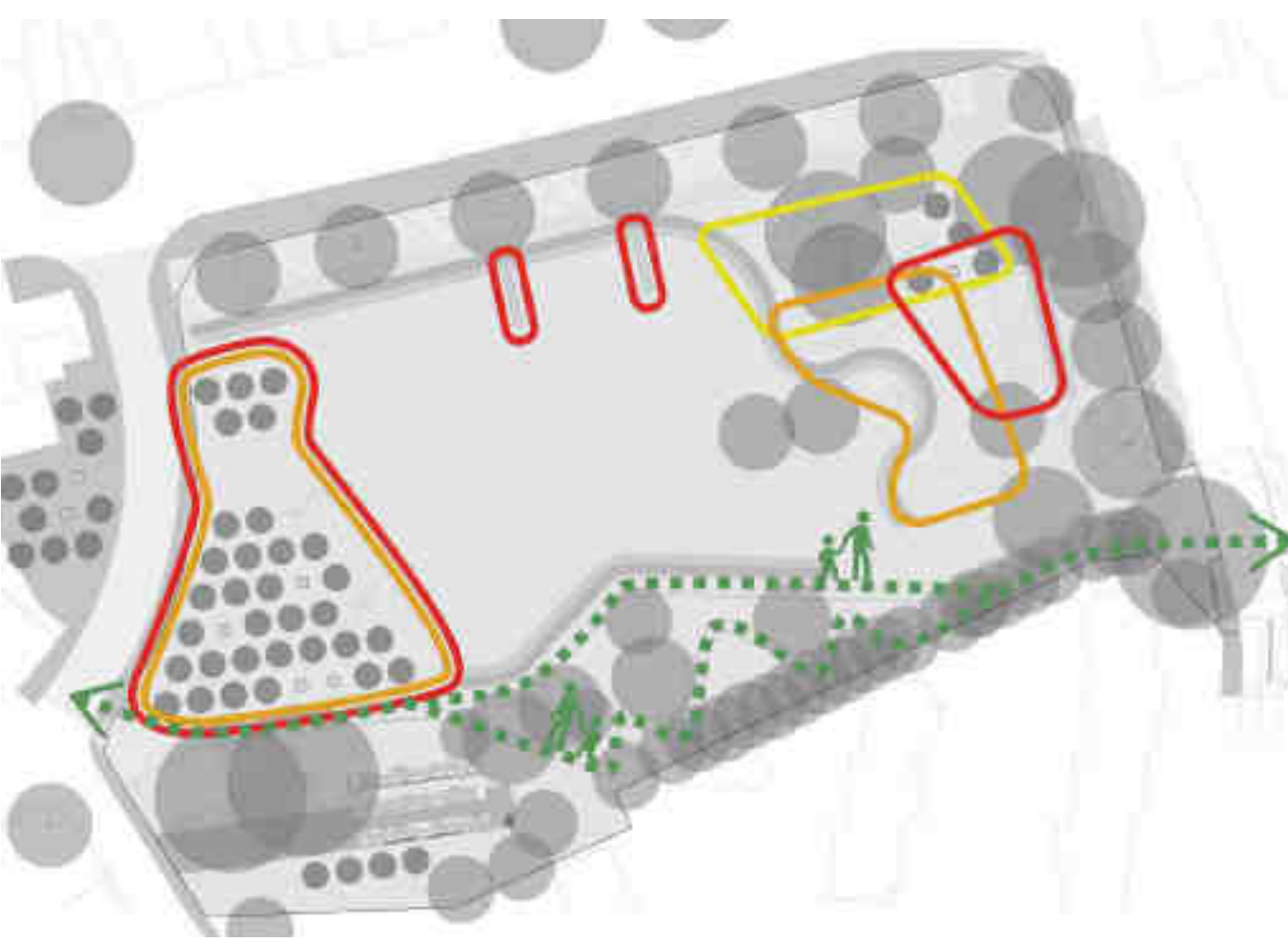
DECKS GIVE PEOPLE A PLACE TO SIT, RELAX OR PERFORM



IN GROUND TRAMPOLINES COULD BE INTERSPERSED BETWEEN THE FRUIT TREES



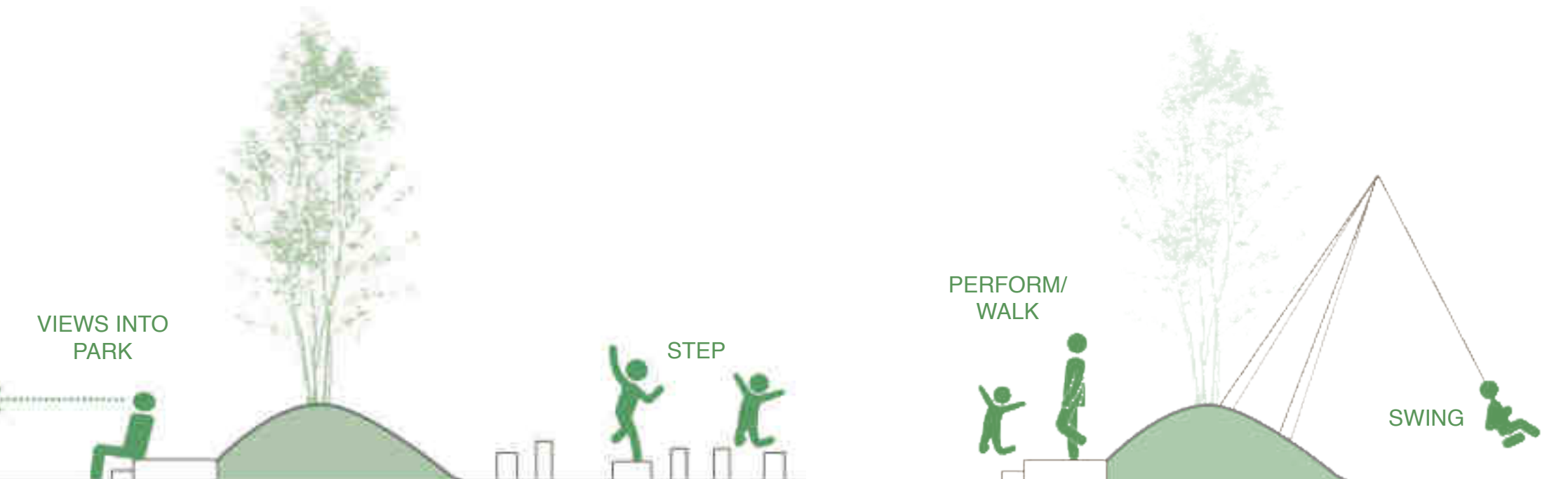
BALANCING LOGS ALLOW CHILDREN TO DEVELOP COORDINATION AND GIVE PARENTS A PLACE TO SIT



PROPOSED PLAY MIX FOR OPTION 1 WITHIN DEAN GARDENS, SHOWING AN OVERLAP OF PLAY AGE RANGES

LANDFORM

- The landform in this option takes the shape of a **6 winding earth mound** with a curved seating edge running along it that faces into the park. The seating edge will give people a place to watch performances, relax or sit whilst their children play.
- Play elements are integrated into this piece of landform to reduce segregation and make use of its intrinsically playable shape.



CONCEPT SECTIONS SHOWING SEATING EDGE ALONG LANDFORM WITH INTEGRATED PLAY ELEMENTS

COMMUNITY

- This option contains a **7 Community Garden with growing beds** and **8 a watering point**. The growing beds are linear and vary in height to allow people of mixed ability to access and use them. The watering point also has added play value and can be used as a drinking fountain. The community garden in this option is further south in the park, activating the S/W Corner.
- There is a space to the east of the park for **9 Weekend Markets**.
- We believe that the success of a park is partly down to the integration of uses and functions within it. This insures that a wide variety of people interact, perhaps when they wouldn't usually, and this can facilitate behavioural change.



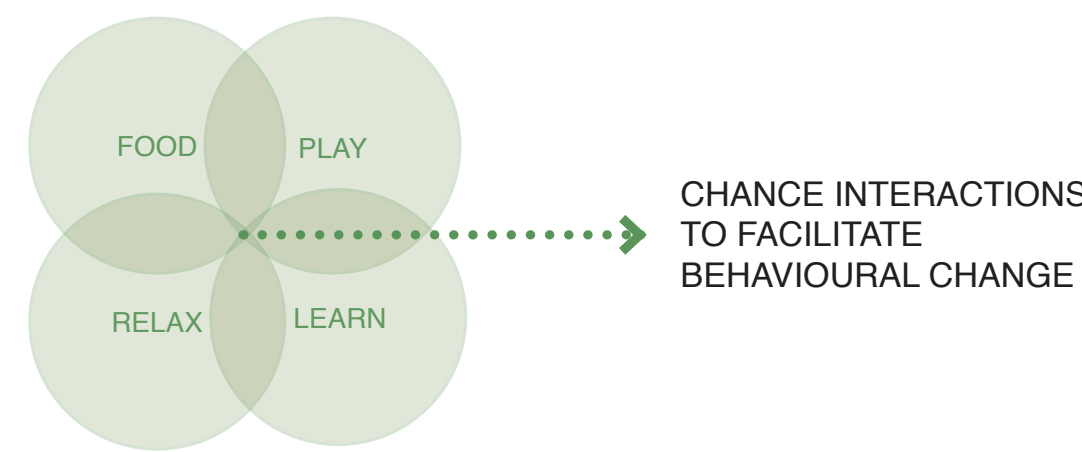
A COMMUNITY GARDEN COULD PROMOTE COMMUNITY COHESION AND HELP REDUCE ANTI SOCIAL BEHAVIOUR



COMMUNITY GARDEN WITH ACCESSIBLE GROWING BEDS



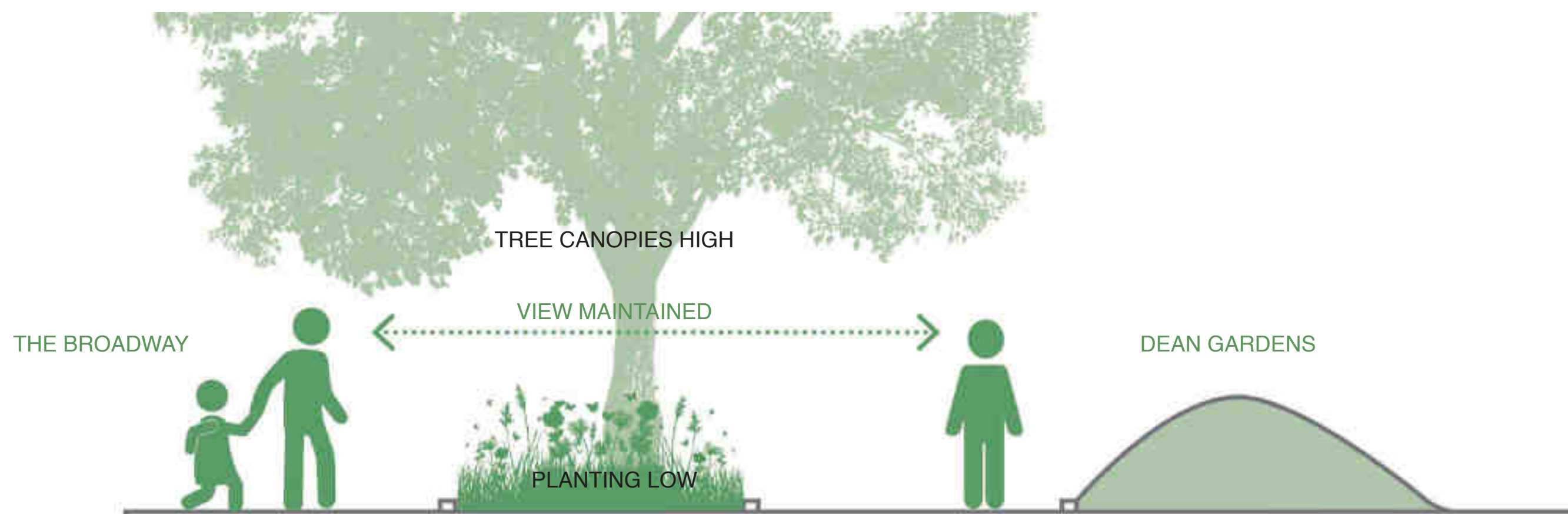
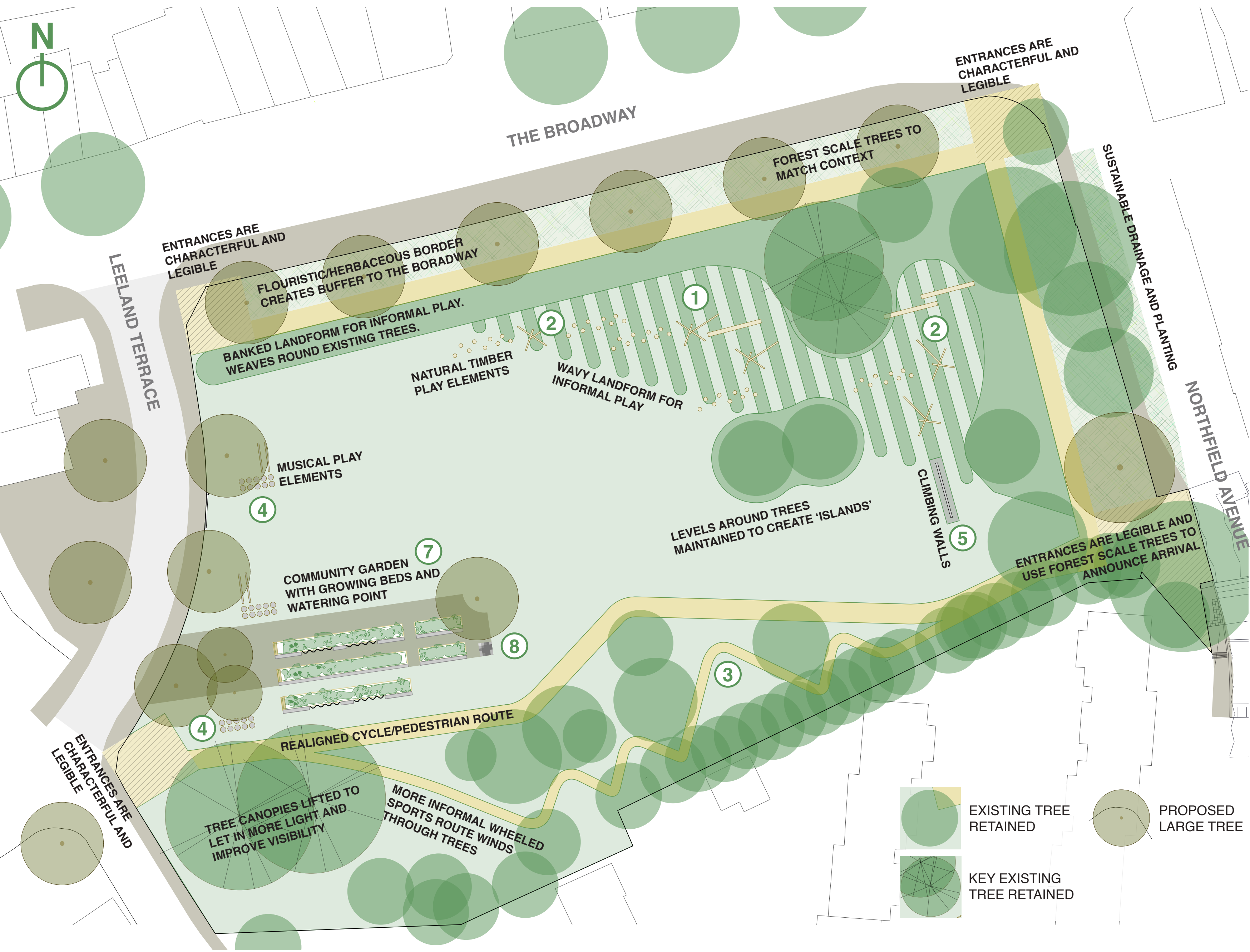
WATER POINT FOR THE GARDEN ALSO USED FOR DRINKING AND PLAY



HELP SHAPE THE FUTURE OF DEAN GARDENS

4

OPTION 2 - USING LANDFORM FOR PLAY - WAVES



CONCEPT SECTION SHOWING PLANTED EDGE ALONG THE PARK'S BOUNDARY.

OPTION 2 - CONCEPT IMAGE



OPTION 2 - ILLUSTRATIVE AXONOMETRIC



THIS OPTION INCLUDES THE FOLLOWING INGREDIENTS: PLAY

- The main play element in this option uses **1 Wavy Landform** that is un-prescriptive and cross-generational. The waves have **2 natural timber play** elements set within them which vary in ability use and ambition. This creates a continuous play surface that children can progress through as they grow older and more ambitious, seeking out more challenging play.
- A **3 winding wheeled sports route** for a wide range of abilities is also included in this option. This will allow children, of varying age and ability, to learn how to ride their wheels and also creates a playful route to school.
- 4 Musical play elements** are also included in Option 2. Successful play spaces stimulate the five senses and sound play will encourage imagination and creativity.
- Youth play provision in Option 2 is provided through **5 small climbing walls**. These walls provide people with the opportunity to climb and will appeal to a variety of age ranges.



PLAY THROUGH SOUND AND MUSIC ENGAGES OTHER SENSES



SMALL CLIMBING WALLS PROVIDE INTERGENERATIONAL PLAY



A PLAYFUL ROUTE TO LEARN TO RIDE YOUR WHEELS



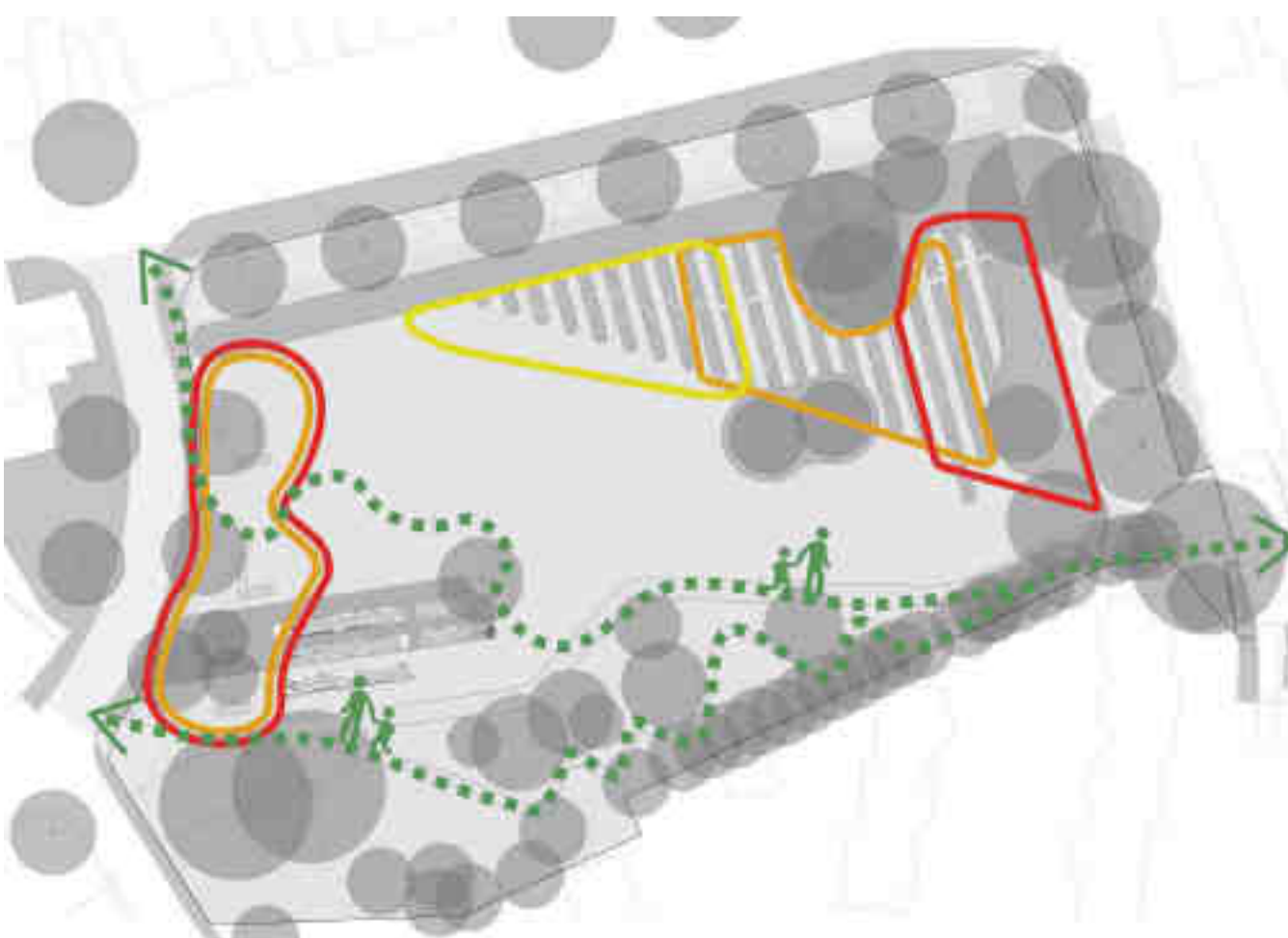
BESPOKE TIMBER PLAY POSTS WITH ROPE CLIMBING NET



TIMBER CLIMBING FRAME WITH STEEL SLIDE



ROPE SWING FROM CANTILEVERED TIMBER ARM



PROPOSED PLAY MIX FOR OPTION 2 WITHIN DEAN GARDENS, SHOWING AN OVERLAP OF PLAY AGE RANGES

LANDFORM

- The landform in this option **6 follows the tree line**, retaining existing trees and creating characterful 'islands'. This landform is high enough to prevent people from easily crossing over but is low enough to ensure visibility across the park is maintained.
- Running perpendicular to this landform are smaller **1 waves** which create a fun, un-prescriptive terrain for children to play on. A surface like this will help promote physical activity and sustainable transportation within the park. Dean Gardens is very popular with children and parents on the walk to and from School. Ensuring the design of the park creates a playful route to school, where children can play, learn new skills and build their confidence, will encourage more people to be active. We think play can be an important route into more formal sport and Dean Gardens could provide this opportunity.



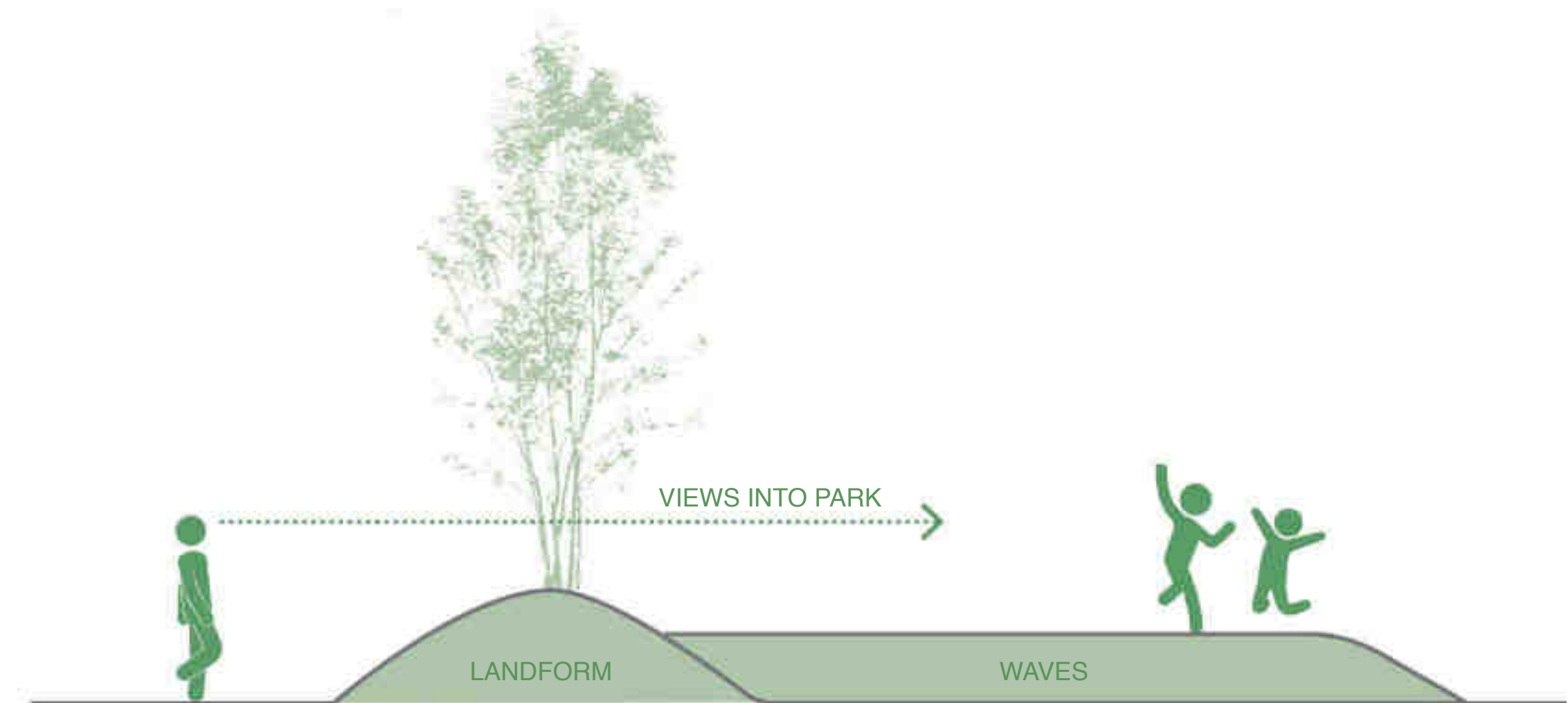
ROLLING EARTHFORMS CREATE WAVES TO RUN OVER



A SURFACE THAT CAN BE PLAYED ON IN MANY DIFFERENT WAYS



AN INTRINSICALLY PLAYABLE SURFACE THAT DEFINES THE CHARACTER OF THE SPACE



CONCEPT SECTION THROUGH LANDFORM AND WAVY SURFACE. LANDFORM HELPS KEEP CIRCULATION TO THE EXTENTS OF THE PARK WHILST MAINTAINING VISUAL PERMEABILITY

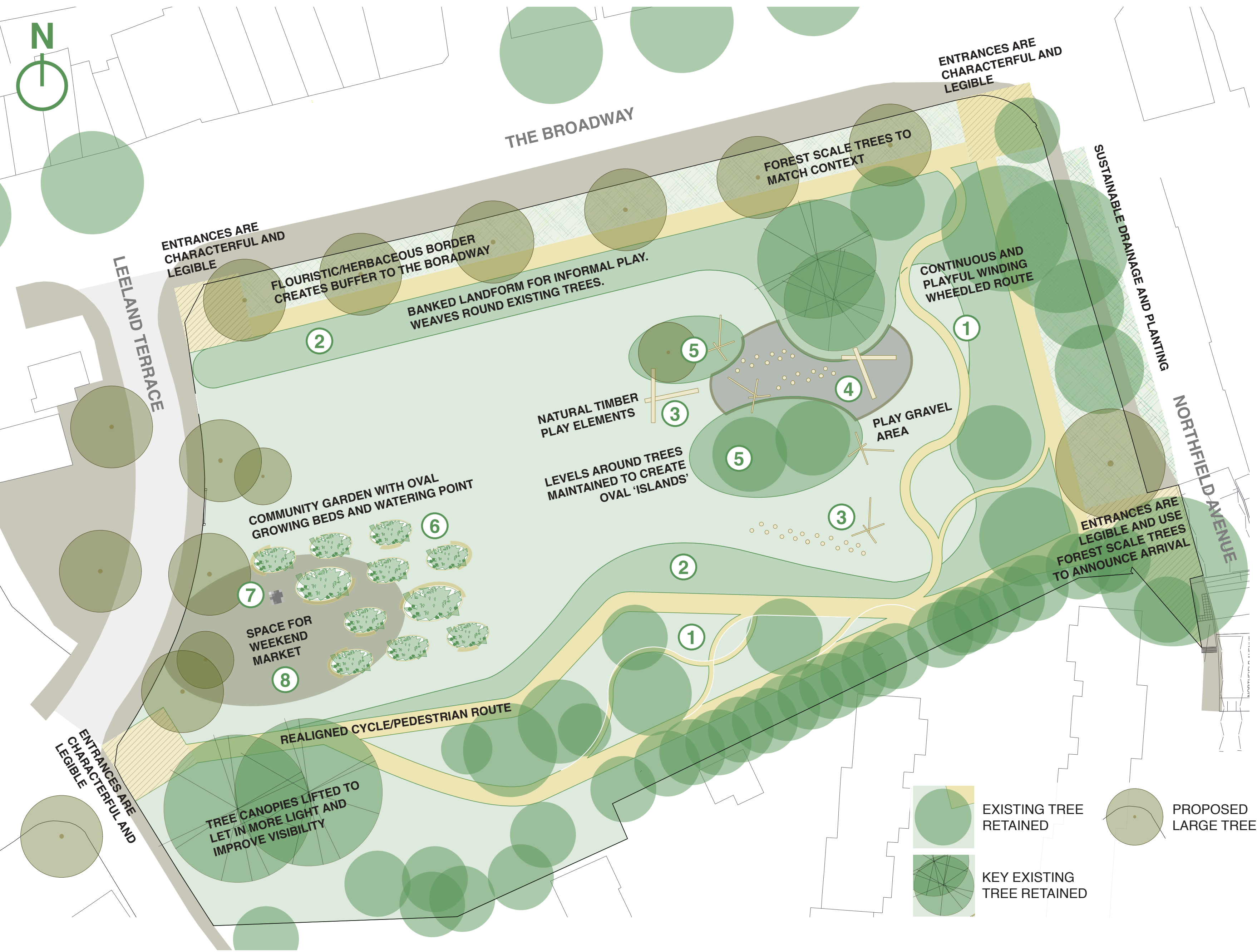
COMMUNITY

- This option contains a Community Garden with **7 growing beds** and a **8 watering point**. The growing beds are linear and vary in height to allow people of mixed ability to access and use them. The watering point also has added play value and can be used as a drinking fountain. The Community Garden has a more central location along Leeland Terrace.

HELP SHAPE THE FUTURE OF DEAN GARDENS

5

OPTION 3 - USING LANDFORM FOR PLAY - ISLAND AND BOWLS



OPTION 3 - CONCEPT IMAGE



OPTION 3 - ILLUSTRATIVE AXONOMETRIC



THIS OPTION INCLUDES THE FOLLOWING INGREDIENTS: PLAY

- The main play element in Option 3 is a **① continuous windy route** that snakes through the park, round trees and over landform. This route will vary in difficulty to allow it to be used by a mixture of abilities and ages. The route will be for wheeled sports such as cycling, skating and scooting and will have obstacles and objects to interact with on your way round. The route will widen and narrow, split and rejoin and also be used by those on their way to and from school.
- ② Landform** and **③ timber play elements** will also be present in this option, with an oval area dedicated to **④ play gravel** as well. Successful play allows children to have access to a range of materials they can manipulate and move. Gravel can be made into piles, spilled, shared, carried and will provide an excellent avenue for children to learn physical, cognitive, and social skills.



WHEELED SPORTS OBSTACLES ALONG A PLAYFUL ROUTE



WHEELED SPORTS ROUTE INTEGRATED WITHIN THE PARK



SURFACES CAN VARY IN DIFFICULTY AND AMBITION



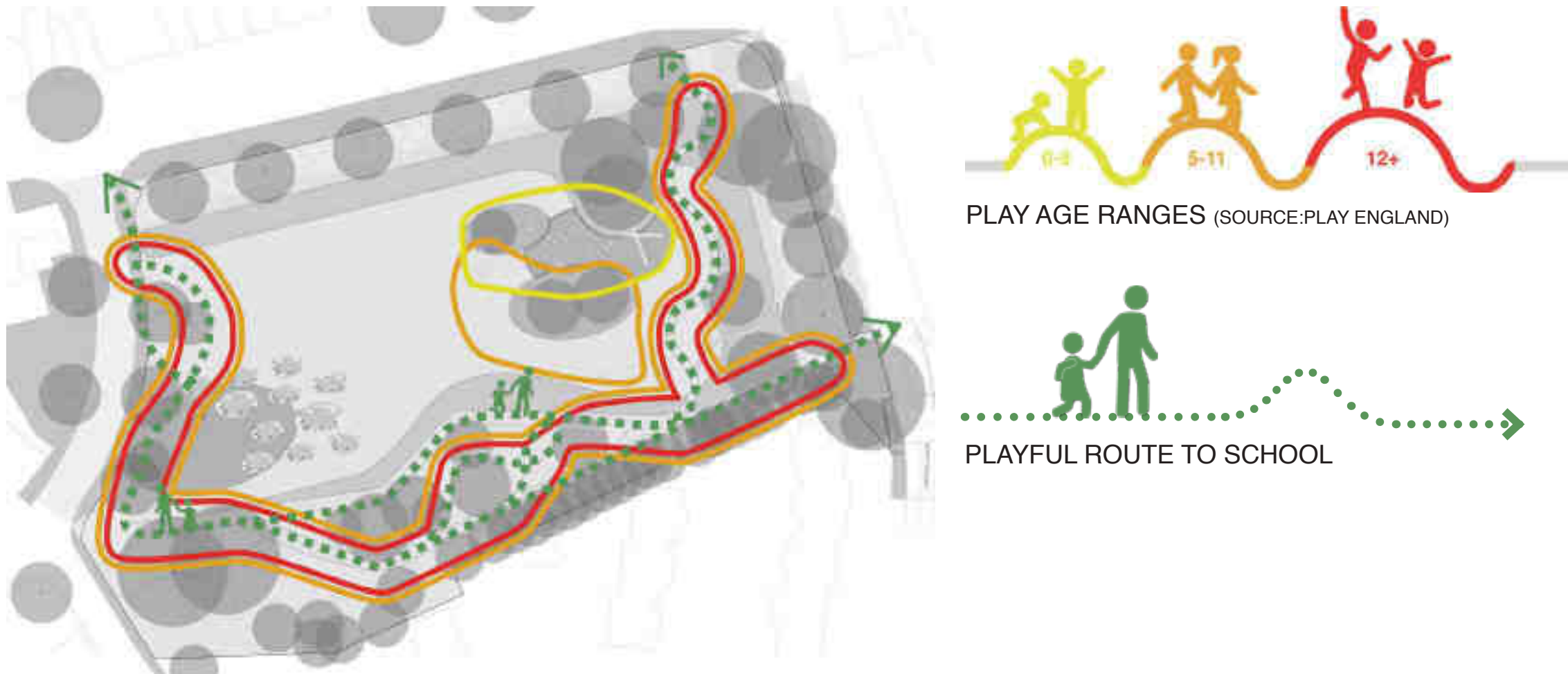
LARGE LOGS AND TREE TRUNKS HAVE GREAT PLAY VALUE



TIMBER BALANCING STUMPS



PLAY GRAVEL IN WALPOLE PARK IS WELL USED AND VERY POPULAR



PROPOSED PLAY MIX FOR OPTION 3 WITHIN DEAN GARDENS, SHOWING AN OVERLAP OF PLAY AGE RANGES

LANDFORM

- The landform in this option follows the tree line and creates characterful **⑤ oval 'islands'** and **bowls**. This landform is high enough to prevent people from easily crossing over but is low enough to ensure visibility across the park is maintained.
- The landform also allows existing trees to be retained as it responds to the levels around the Root Protection Areas.



A GRASSY ISLAND - NON-PRESCRIPTIVE NATURAL PLAY



A SWING SET WITHIN A PIECE OF LANDFORM.



TREES WITHIN LANDFORM



CONCEPT SECTION THROUGH LANDFORM AND OVAL ISLANDS. LANDFORM IS USED TO RETAIN EXISTING TREES BY MAINTAINING LEVELS AROUND THEIR ROOT PROTECTION AREA.

COMMUNITY

- This option contains a Community Garden with **⑥ growing beds** and a **⑦ watering point**. The growing beds are oval shaped and vary in height to allow people of mixed ability to access and use them. The watering point also has added play value and can be used as a drinking fountain.
- A space on west side of the park, beside the community garden is kept for **⑧ weekend markets**. Produce from the community garden could be sold here. This will help enliven this side of the park and bring weekend activity.



OVAL SHAPED COMMUNITY GARDENING



GROWING BEDS AT DIFFERENT LEVELS ALLOW ACCESS TO A RANGE OF ABILITIES AND AGES



PRODUCE GROWN IN THE COMMUNITY GARDEN COULD BE SOLD AT A WEEKEND MARKET