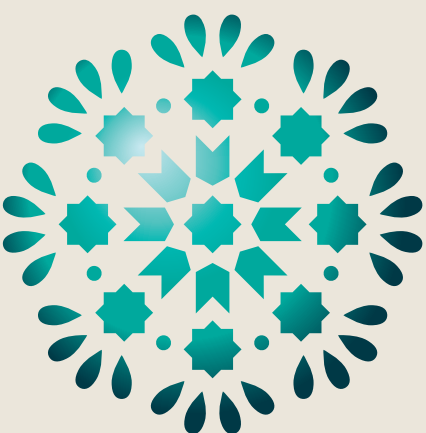


The Healthy Streets Approach

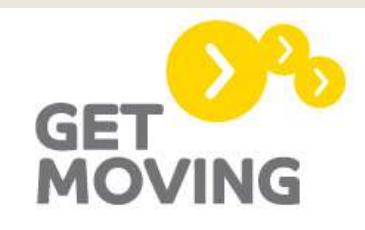
As outlined in his Transport Strategy, the Mayor of London wants to increase the proportion of trips Londoners make on foot, by bicycle or using public transport to 80 per cent by 2041. This means an average of 3 million fewer car journeys in London each day. The Healthy Streets Approach is central to achieving this ambition. Measures to restrict motor traffic on certain streets while allowing pedestrians and cyclists to pass, banned turns, one ways, and timed closures outside schools during pick up and drop of times are among the ways to help make vulnerable road users, including children and the elderly, feel more comfortable making journeys on foot or by bike.

“My vision to create ‘Healthy Streets’ aims to reduce traffic, pollution and noise, create more attractive, accessible and peoplefriendly streets where everybody can enjoy spending time and being physically active, and ultimately to improve people’s health.”

Sadiq Khan, The Mayor of London



LIVE WEST EALING



Live West Ealing: Low Traffic Neighbourhood

In March 2018 Ealing was awarded funding for the Live West Ealing initiative as part of the Mayor of London's Liveable Neighbourhood programme. The Live West Ealing programme aims to reduce motor traffic dominance whilst supporting communities and local businesses by making the town centre more attractive and accessible.

Through feedback received by the council, residents have reported high volumes of motor traffic passing through the residential streets south of Broadway. This is a view is supported by comprehensive traffic count data we have recorded in the area.

The next phase of Live West Ealing is to work with residents to design a low traffic neighbourhood in the area south of Broadway. A low traffic neighbourhood is a group of residential streets where through motor traffic is discouraged so that the neighbourhood is made more accessible to all. In particular for children, older people and those who may be more vulnerable to the impact of high motor traffic volumes and speeds.

LTN Engagement Timeline

Traffic data collection

2018-2019



Pop-ups and drop-in events

December 2019



Co-design workshops

January 2020



Showcase event for LTN proposals

January/February 2020



Please complete the short survey at livewestealing.org

We want to hear from you. How does it feel to move around? What are some of the issues that you face on a daily basis? What improvements would you like to see?

Live West Ealing: Low Traffic Neighbourhood

Here are some examples of the interventions that could be included in the scheme.



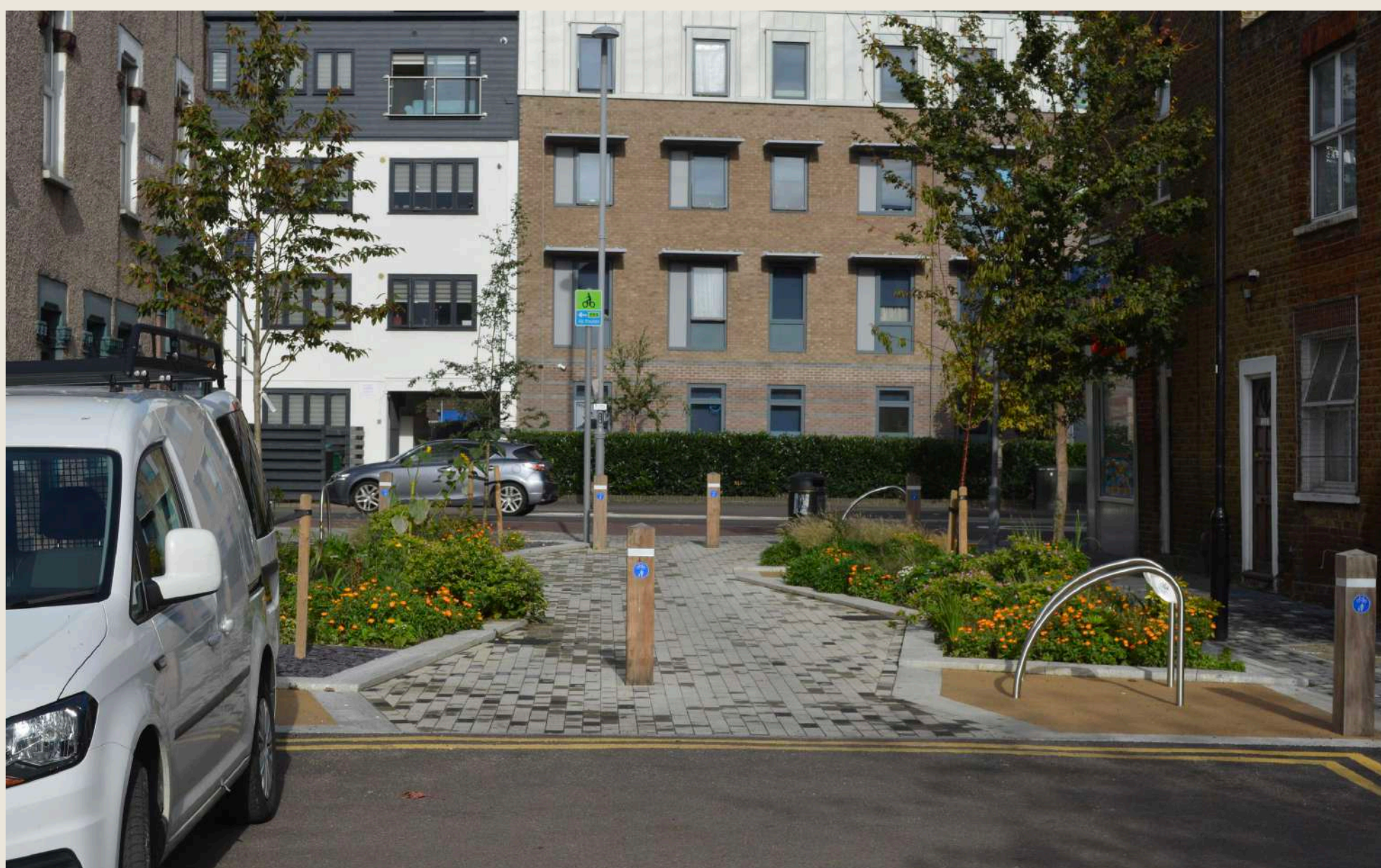
Priority for pedestrians at junctions



On-street cycle storage for residents



New controlled crossings



Access-only streets (modal filter)



On-street 'Parklets' or 'pocket parks'

Please complete the short survey at livewestealing.org

We want to hear from you. How does it feel to move around? What are some of the issues that you face on a daily basis? What improvements would you like to see?

Live West Ealing: Low Traffic Neighbourhood

Here are some examples of complimentary measures to improve the look and feel of the neighbourhood.



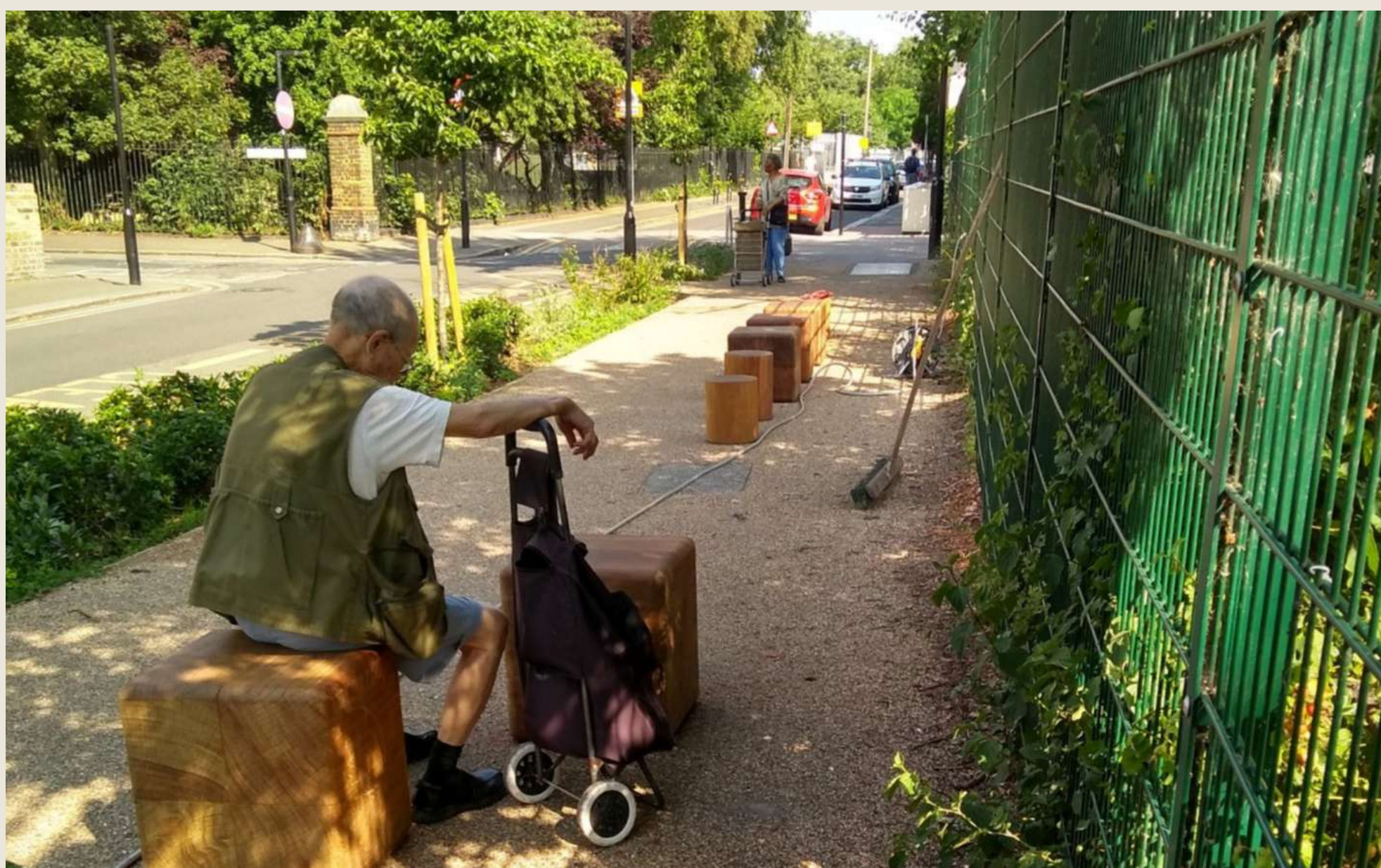
Wayfinding and decluttering



Speed humps



Tree planting and greening



Places to sit and rest

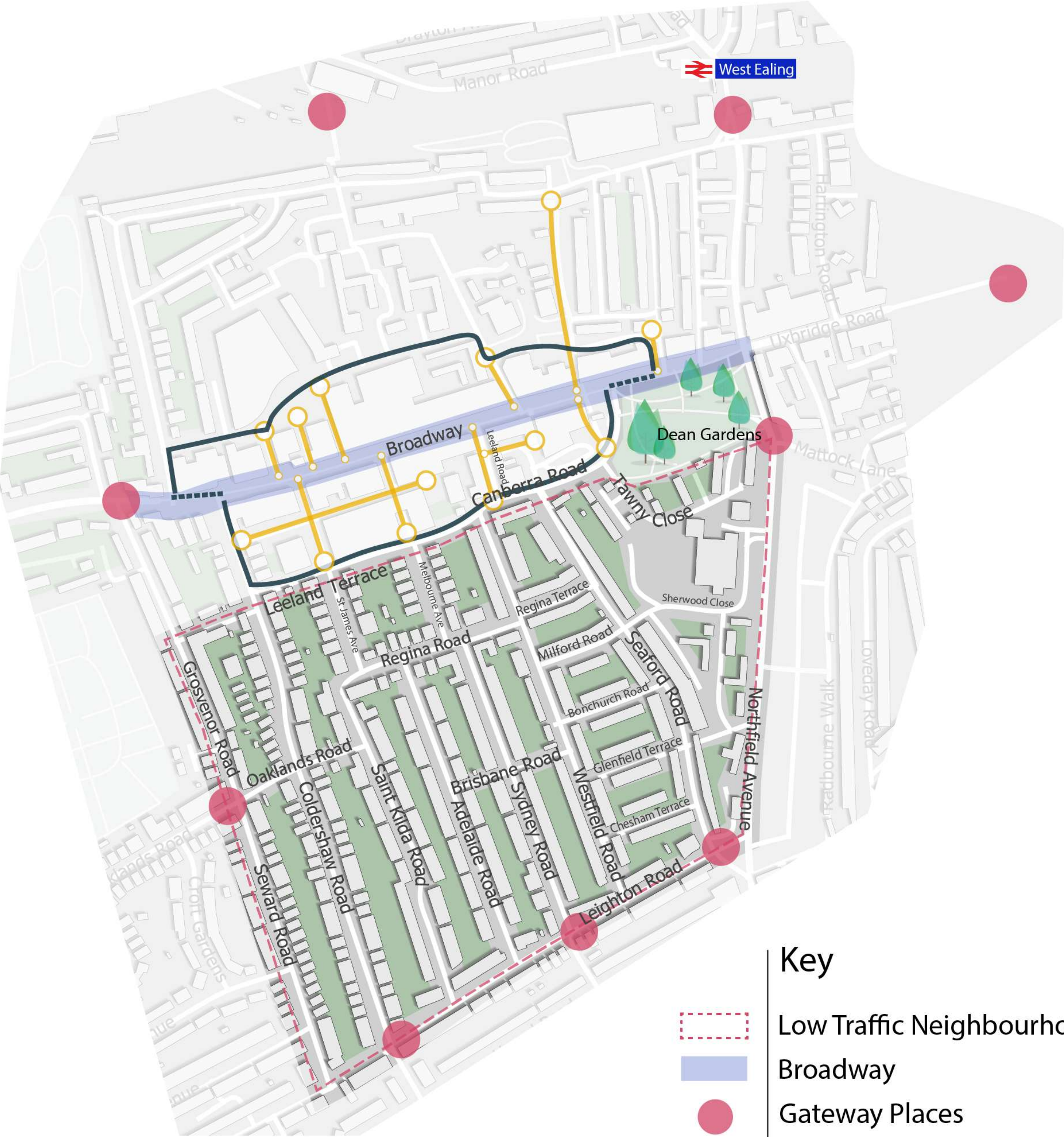


High quality dropped kerbs

Please complete the short survey at livewestealing.org

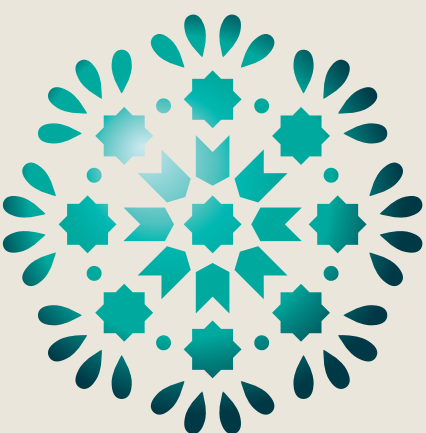
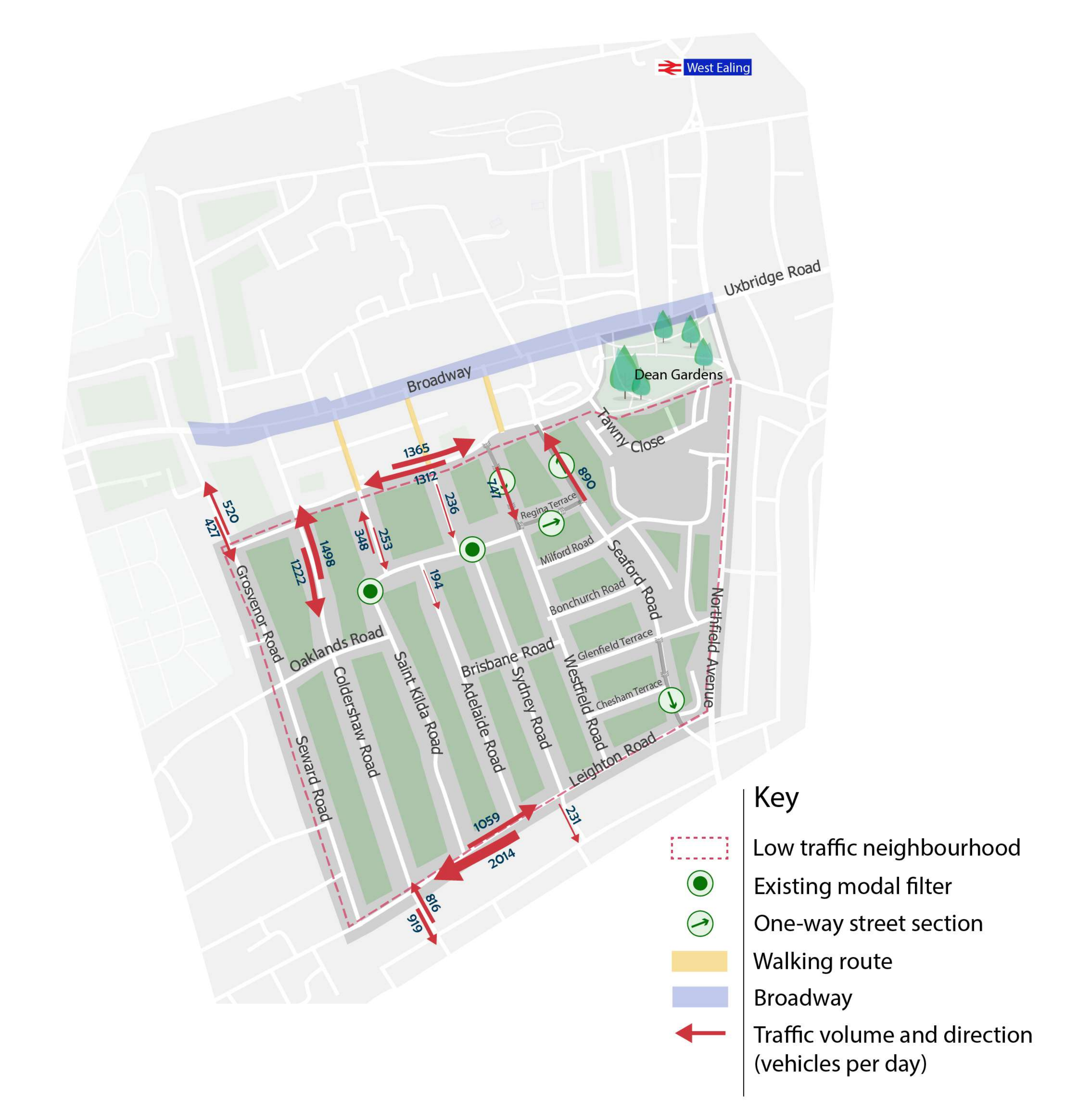
We want to hear from you. How does it feel to move around? What are some of the issues that you face on a daily basis? What improvements would you like to see?

Live West Ealing: Low Traffic Neighbourhood



- Key
- Low Traffic Neighbourhood
 - Broadway
 - Gateway Places
 - Orchard Ring
 - Passageway Places

Live West Ealing: Low Traffic Neighbourhood



LIVE WEST EALING



Ealing

www.ealing.gov.uk



TRANSPORT
FOR LONDON

