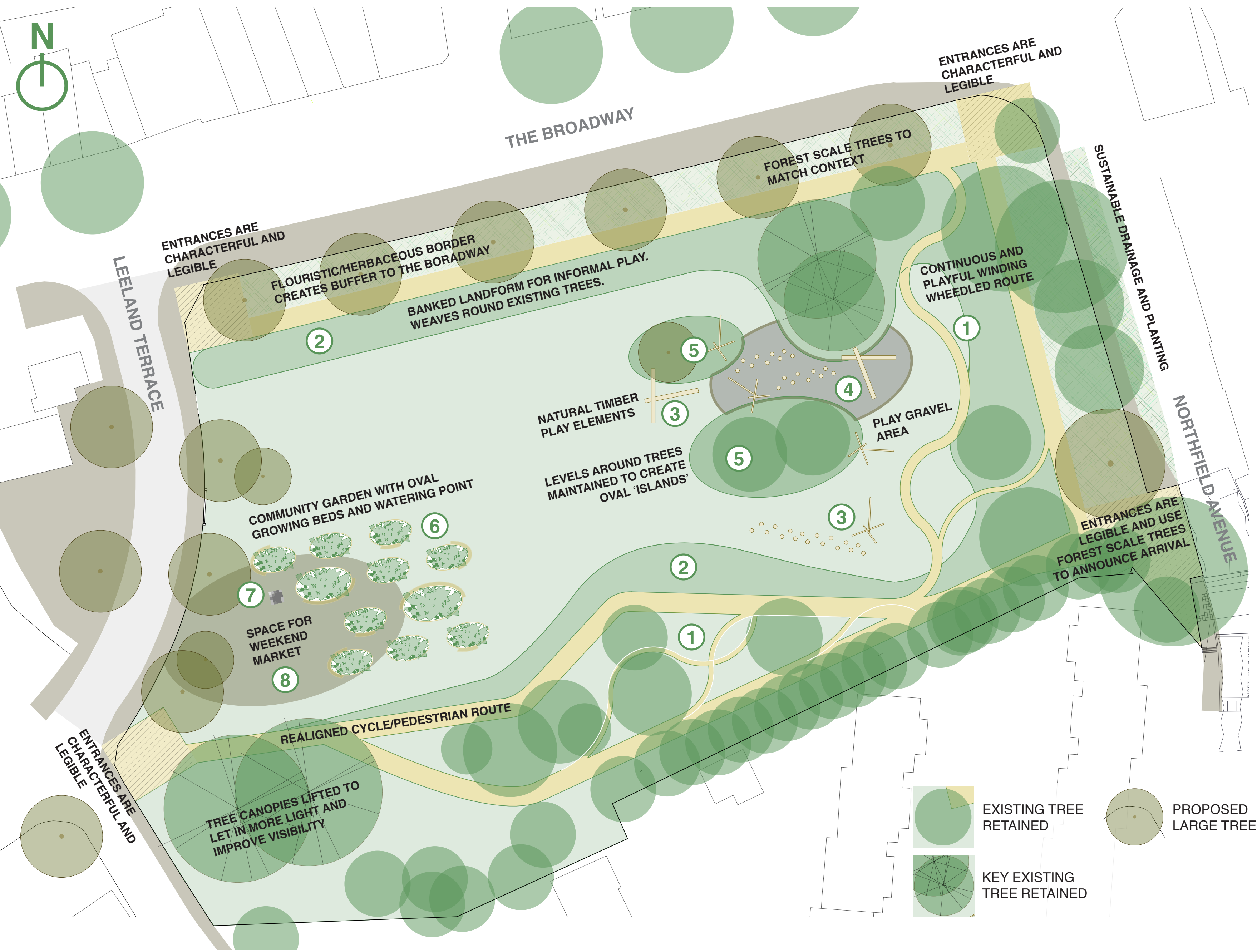


HELP SHAPE THE FUTURE OF DEAN GARDENS

5

OPTION 3 - USING LANDFORM FOR PLAY - ISLAND AND BOWLS



OPTION 3 - CONCEPT IMAGE

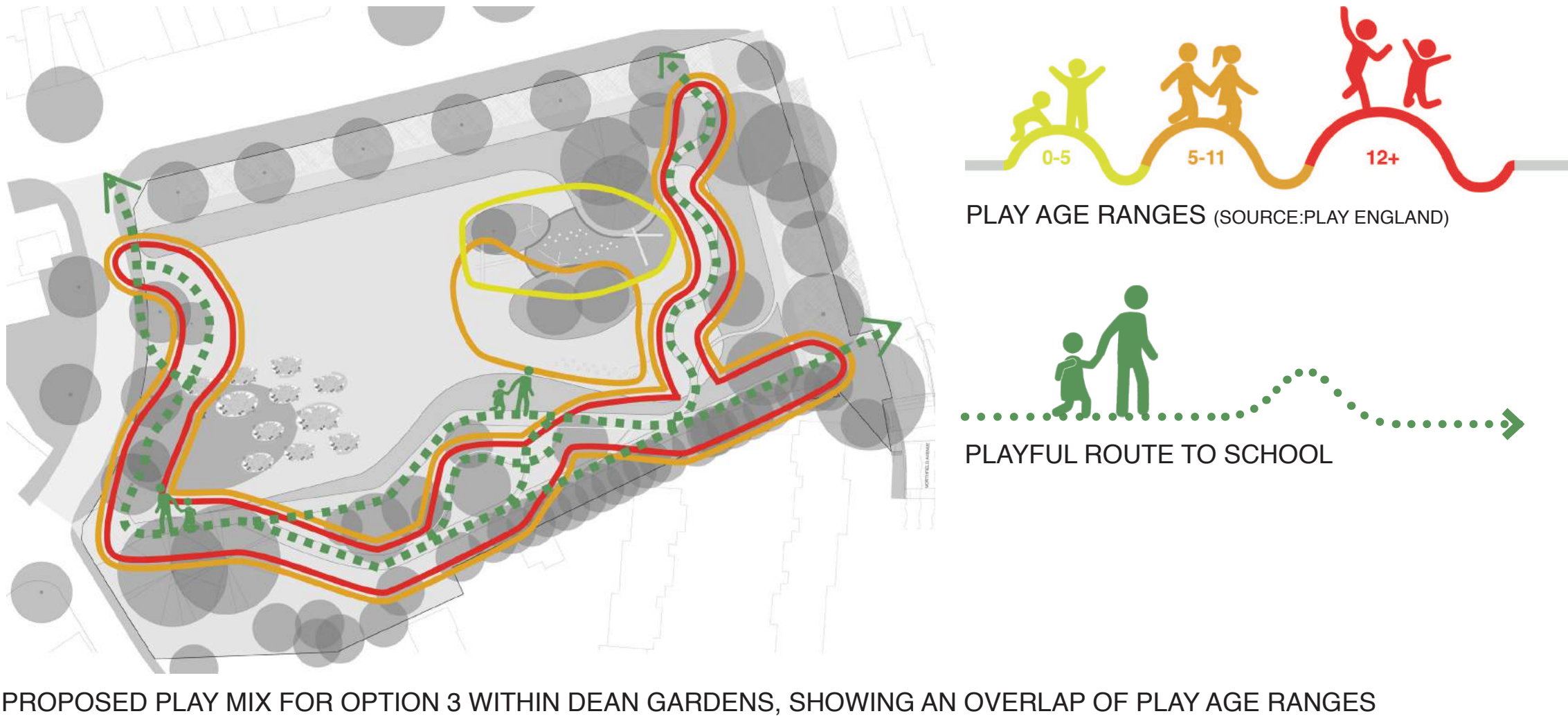


OPTION 3 - ILLUSTRATIVE AXONOMETRIC



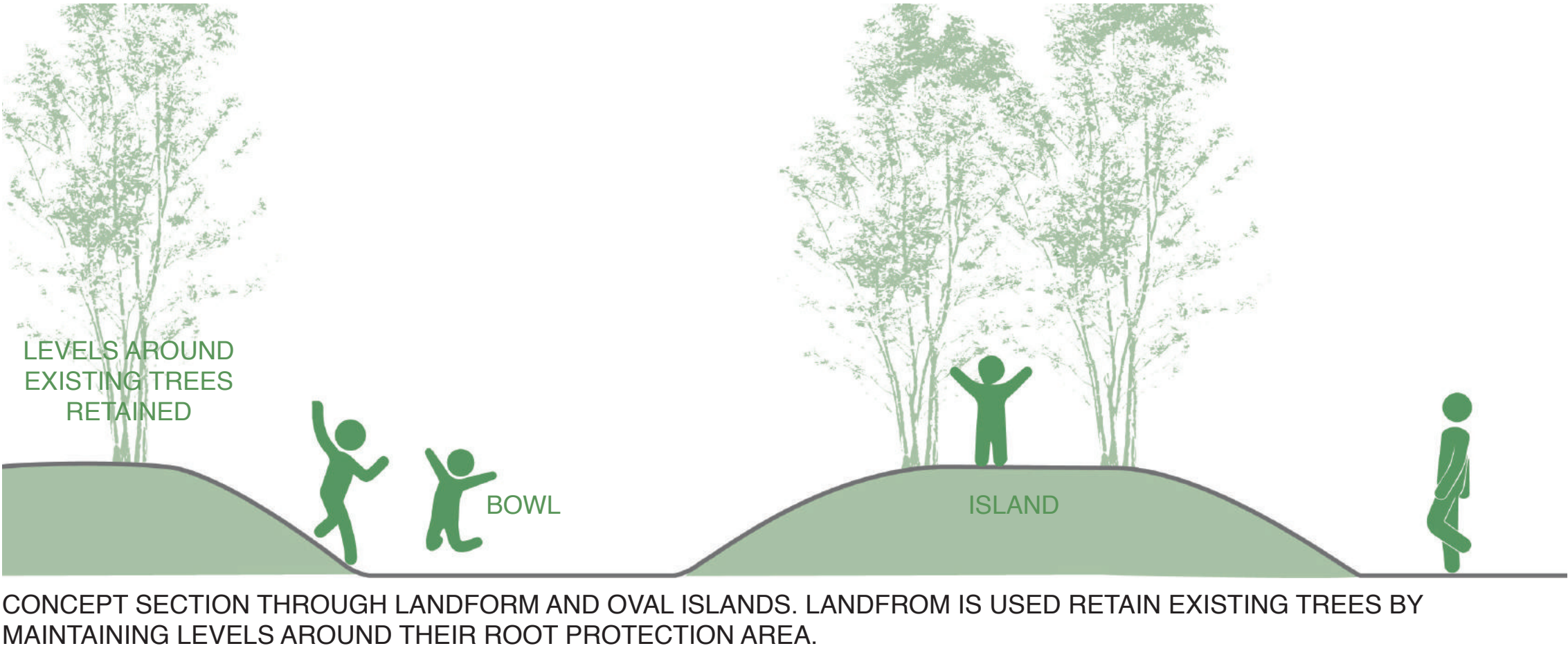
THIS OPTION INCLUDES THE FOLLOWING INGREDIENTS: PLAY

- The main play element in Option 3 is a **① continuous windy route** that snakes through the park, round trees and over landform. This route will vary in difficulty to allow it to be used by a mixture of abilities and ages. The route will be for wheeled sports such as cycling, skating and scooting and will have obstacles and objects to interact with on your way round. The route will widen and narrow, split and rejoin and also be used by those on their way to and from school.
- ② Landform** and **③ timber play elements** will also be present in this option, with an oval area dedicated to **④ play gravel** as well. Successful play allows children to have access to a range of materials they can manipulate and move. Gravel can be made into piles, spilled, shared, carried and will provide an excellent avenue for children to learn physical, cognitive, and social skills.



LANDFORM

- The landform in this option follows the tree line and creates characterful **⑤ oval 'islands'** and **bowls**. This landform is high enough to prevent people from easily crossing over but is low enough to ensure visibility across the park is maintained.
- The landform also allows existing trees to be retained as it responds to the levels around the Root Protection Areas.



COMMUNITY

- This option contains a Community Garden with **⑥ growing beds** and a **⑦ watering point**. The growing beds are oval shaped and vary in height to allow people of mixed ability to access and use them. The watering point also has added play value and can be used as a drinking fountain.
- A space on west side of the park, beside the community garden is kept for **⑧ weekend markets**. Produce from the community garden could be sold here. This will help enliven this side of the park and bring weekend activity.

