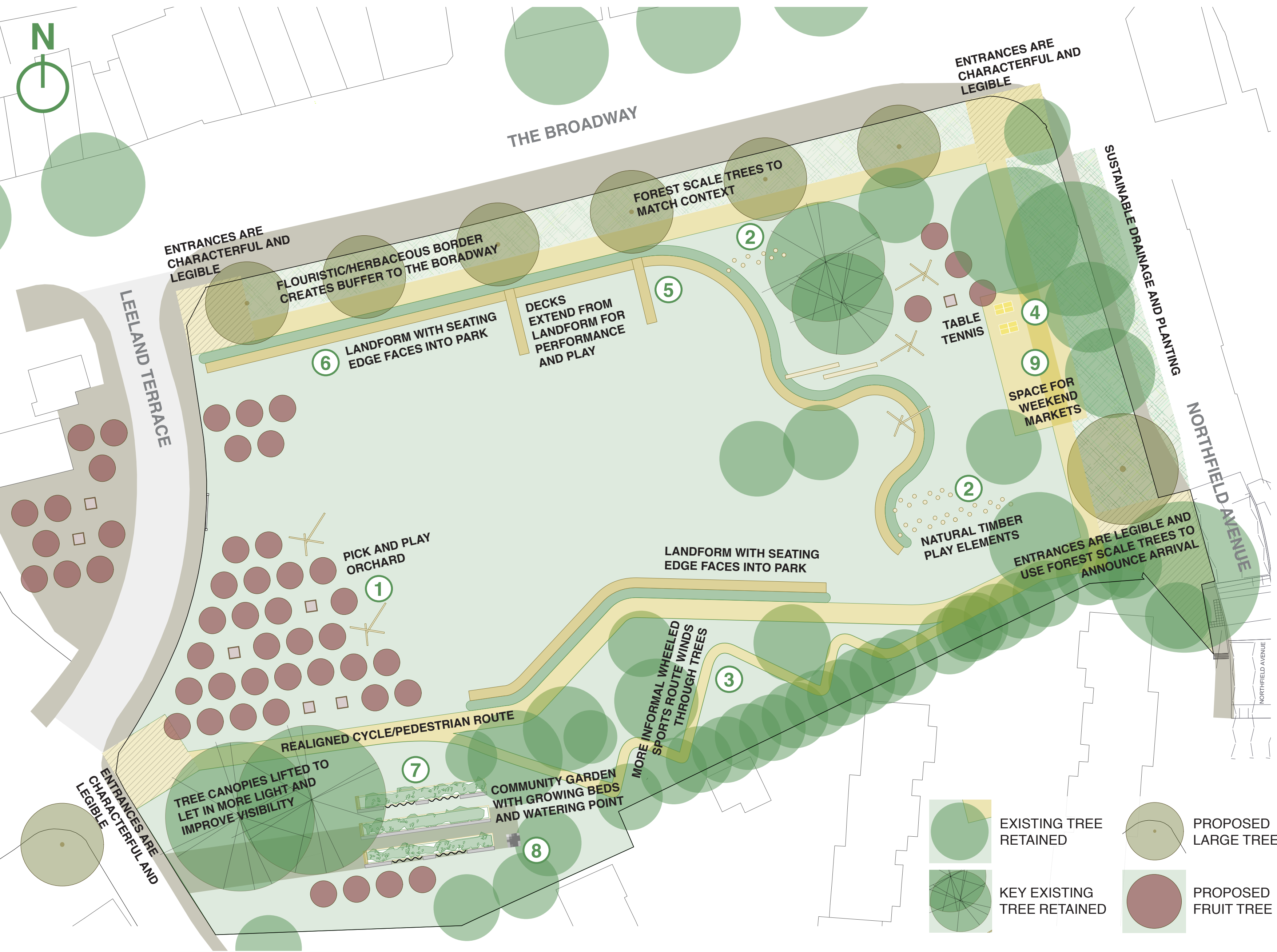


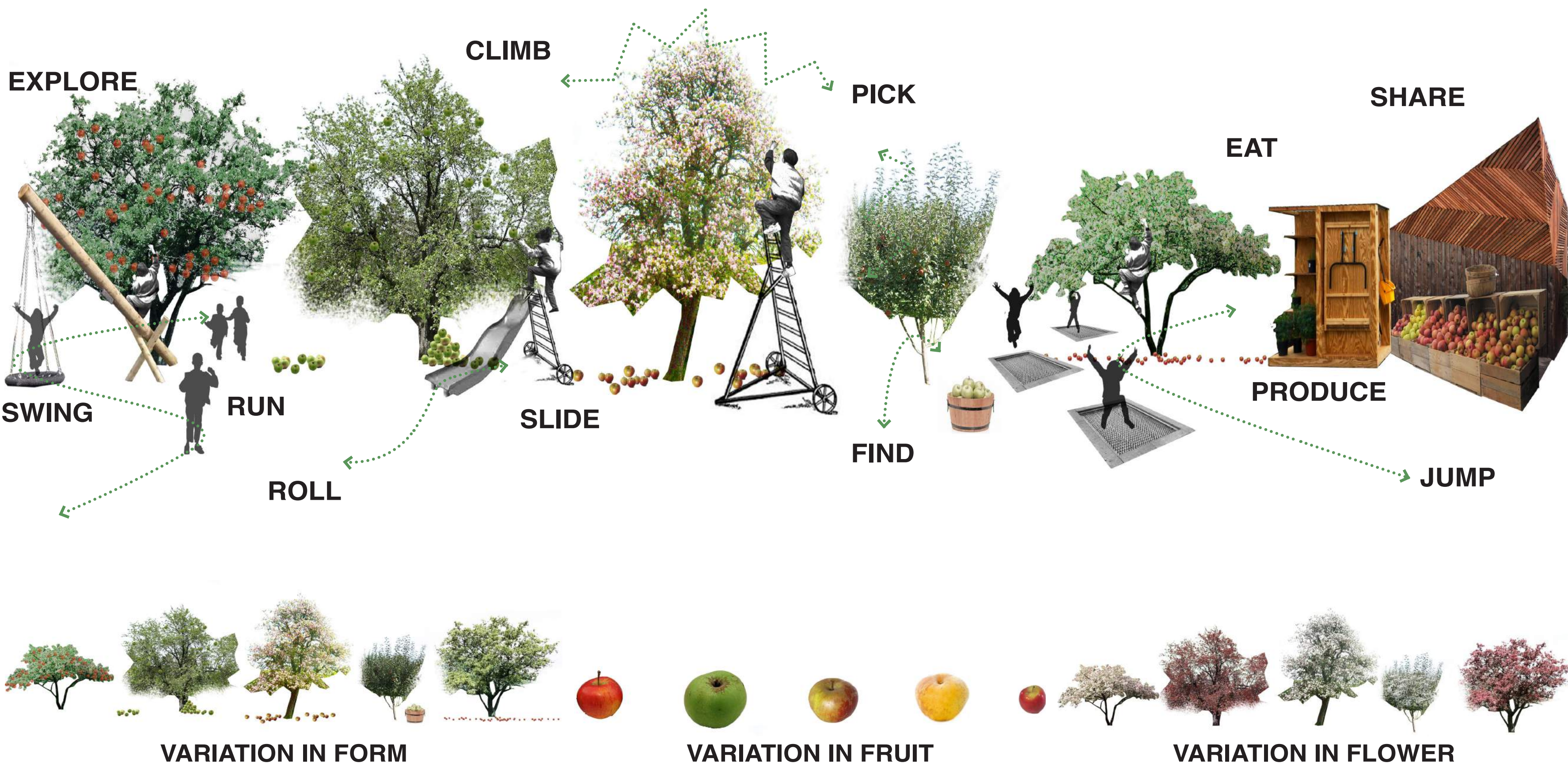
HELP SHAPE THE FUTURE OF DEAN GARDENS

3

OPTION 1 - PICK AND PLAY ORCHARD



PICK AND PLAY ORCHARD - CONCEPT IMAGE



OPTION 1 - ILLUSTRATIVE AXONOMETRIC



THIS OPTION INCLUDES THE FOLLOWING INGREDIENTS:

PLAY

- The main play element in this option is a **1 Pick and Play Orchard** which uses a variety of Apple Trees and Natural play elements to create a fantastic space for learning, exploring and playing. The grid of fruit trees extends through the park and over Leeland Terrace, expanding the park's influence into the public realm.
- 2 Natural timber play elements** are also woven through the park, varying in size and use difficulty. These timber play elements tie into the landform of the park and ensure that play is not constrained to one particular area.
- A **3 winding wheeled sports route** for a wide range of abilities is also included in this option. This will allow children, of varying age and ability, to learn how to ride their wheels and also creates a playful route to school.
- Youth play provision in Option 1 is provided through **4 table tennis tables** and **5 timber decks**. The timber decks are un-prescriptive and can be used for performances, cat walks, sitting, sunbathing and having picnics.



TABLE TENNIS PROVIDES INTERGENERATIONAL PLAY OPTIONS



APPLE TASTING IS A FUN WAY FOR CHILDREN TO LEARN ABOUT HORTICULTURE AND GROWING FOOD



A PICK AND PLAY ORCHARD



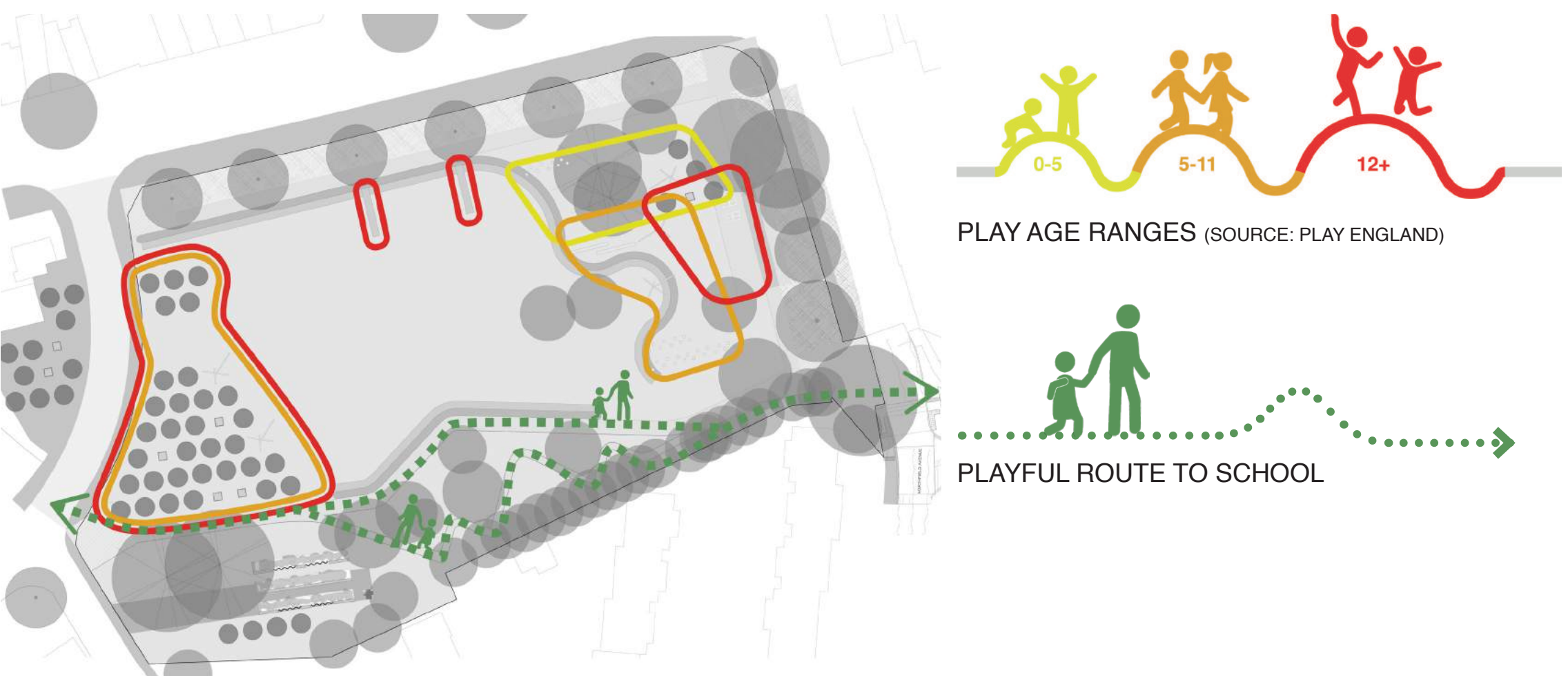
DECKS GIVE PEOPLE A PLACE TO SIT, RELAX OR PERFORM



IN GROUND TRAMPOLINES COULD BE INTERSPERSED BETWEEN THE FRUIT TREES



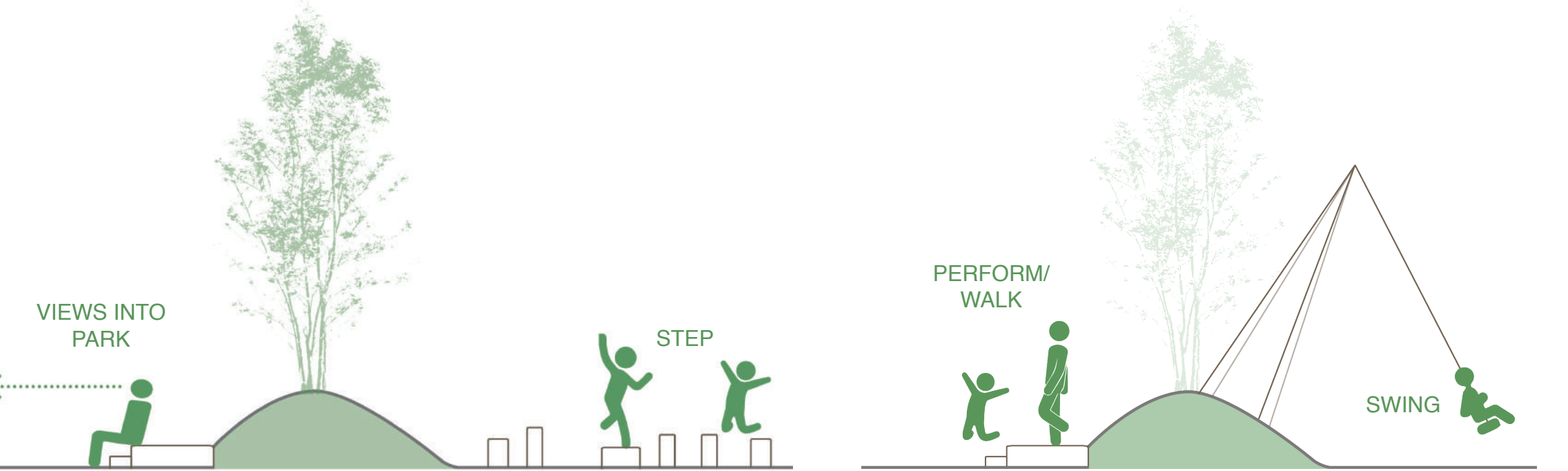
BALANCING LOGS ALLOW CHILDREN TO DEVELOP COORDINATION AND GIVE PARENTS A PLACE TO SIT



PROPOSED PLAY MIX FOR OPTION 1 WITHIN DEAN GARDENS, SHOWING AN OVERLAP OF PLAY AGE RANGES

LANDFORM

- The landform in this option takes the shape of a **6 winding earth mound** with a curved seating edge running along it that faces into the park. The seating edge will give people a place to watch performances, relax or sit whilst their children play.
- Play elements are integrated into this piece of landform to reduce segregation and make use of its intrinsically playable shape.



CONCEPT SECTIONS SHOWING SEATING EDGE ALONG LANDFORM WITH INTEGRATED PLAY ELEMENTS

COMMUNITY

- This option contains a **7 Community Garden with growing beds** and **8 a watering point**. The growing beds are linear and vary in height to allow people of mixed ability to access and use them. The watering point also has added play value and can be used as a drinking fountain. The community garden in this option is further south in the park, activating the SW Corner.
- There is a space to the east of the park for **9 Weekend Markets**.
- We believe that the success of a park is partly down to the integration of uses and functions within it. This insures that a wide variety of people interact, perhaps when they wouldn't usually, and this can facilitate behavioural change.



A COMMUNITY GARDEN COULD PROMOTE COMMUNITY COHESION AND HELP REDUCE ANTI SOCIAL BEHAVIOUR



COMMUNITY GARDEN WITH ACCESSIBLE GROWING BEDS



WATER POINT FOR THE GARDEN ALSO USED FOR DRINKING AND PLAY

